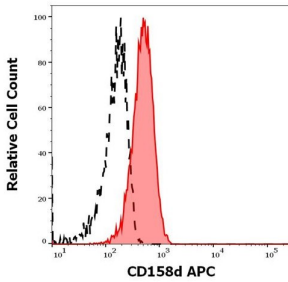
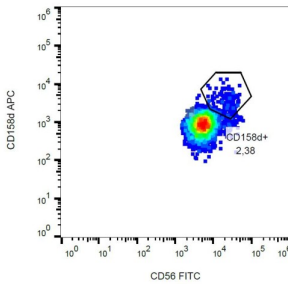


# CD158d Antibody (APC)

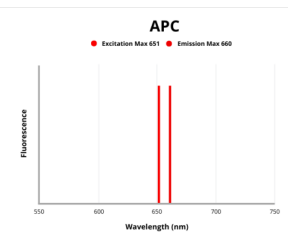
Catalogue No.: abx139664



Flow cytometric surface staining analysis of NKL cells using APC-conjugated CD158d Antibody (10 µl/10<sup>5</sup> cells, red histogram) and Mouse IgG1 isotype control (6 µg/ml, black histogram)



Flow cytometric surface staining analysis of CD158d in human peripheral blood using CD158d Antibody (APC).



Fluorescence emission spectra of APC.

CD158d Antibody is a Mouse Monoclonal against CD158d.

**Target:** CD158d

**Clonality:** Monoclonal

**Clone:** G020

**Reactivity:** Human

**Tested Applications:** FCM

**Host:** Mouse

**Recommended dilutions:** FCM: 10 µl/100 µl of whole blood or 10<sup>6</sup> cells. Optimal dilutions/concentrations should be determined by the end user.

# Datasheet

Version: 3.0.0  
Revision date: 14 Jan 2025



<b>Conjugation:</b>	APC
<b>Excitation/Emission:</b>	651/660
<b>Laser Line:</b>	647
<b>Immunogen:</b>	NK3.3 cells and KIR2DL4-Ig fusion protein.
<b>Isotype:</b>	IgG <sub>1</sub> , Kappa
<b>Form:</b>	Liquid
<b>Storage:</b>	Store in the dark at 2-8°C. Avoid exposure to light. Do not freeze.
<b>UniProt Primary AC:</b>	Q99706 ( <a href="#">UniProt</a> , <a href="#">ExpASY</a> )
<b>Gene Symbol:</b>	KIR2DL4
<b>GeneID:</b>	<a href="#">3805</a>
<b>KEGG:</b>	hsa:3805
<b>String:</b>	<a href="#">9606.ENSP00000339634</a>
<b>Buffer:</b>	PBS, pH 7.4, containing 15 mM sodium azide.
<b>Specificity:</b>	The mouse monoclonal antibody recognizes extracellular portion of CD158d / KIR2DL4, a 45 kDa NK cell marker. Cell surface expression and function of CD158d / KIR2DL4 depends on genotype of particular individuals.
<b>Note:</b>	This product is for research use only.