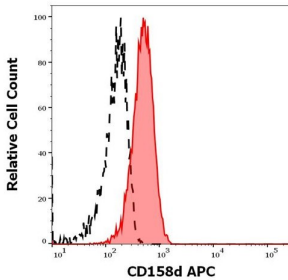
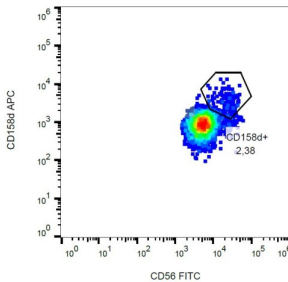


CD158d Antibody (APC)

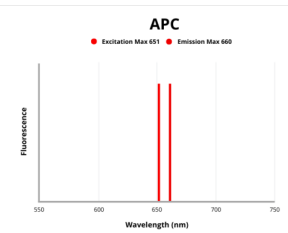
Catalogue No.: abx139664



Flow cytometric surface staining analysis of NKL cells using APC-conjugated CD158d Antibody (10 μ l/10⁶ cells, red histogram) and Mouse IgG1 isotype control (6 μ g/ml, black histogram)



Flow cytometric surface staining analysis of CD158d in human peripheral blood using CD158d Antibody (APC).



Fluorescence emission spectra of APC.

CD158d Antibody is a Mouse Monoclonal against CD158d.

Target: CD158d

Clonality: Monoclonal

Clone: G020

Reactivity: Human

Tested Applications: FCM

Host: Mouse

Recommended dilutions: FCM: 10 μ l/100 μ l of whole blood or 10⁶ cells. Optimal dilutions/concentrations should be determined by the end user.

Datasheet

Version: 4.0.0
Revision date: 12 Mar 2025



Conjugation:	APC
Excitation/Emission:	651/660
Laser Line:	647
Immunogen:	NK3.3 cells and KIR2DL4-Ig fusion protein.
Isotype:	IgG ₁ Kappa
Form:	Liquid
Storage:	Store in the dark at 2-8°C. Avoid exposure to light. Do not freeze.
UniProt Primary AC:	Q99706 (UniProt , ExPASy)
Gene Symbol:	KIR2DL4
GeneID:	3805
KEGG:	hsa:3805
String:	9606.ENSP00000339634
Buffer:	PBS, pH 7.4, containing 15 mM sodium azide.
Specificity:	The mouse monoclonal antibody recognizes extracellular portion of CD158d / KIR2DL4, a 45 kDa NK cell marker. Cell surface expression and function of CD158d / KIR2DL4 depends on genotype of particular individuals.
Note:	THIS PRODUCT IS FOR RESEARCH USE ONLY. NOT FOR USE IN DIAGNOSTIC, THERAPEUTIC OR COSMETIC PROCEDURES. NOT FOR HUMAN OR ANIMAL CONSUMPTION.