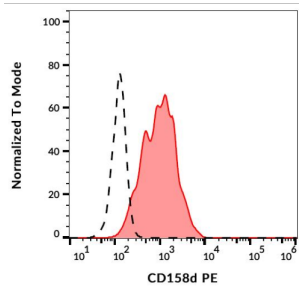
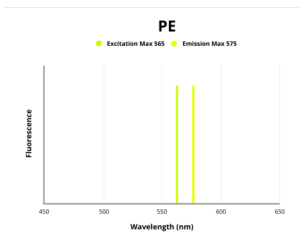


## CD158d Antibody (PE)

Catalogue No.: abx139665



Surface staining of CD158d in human peripheral blood using CD158d Antibody (PE).



Fluorescence emission spectra of PE.

CD158d Antibody is a Mouse Monoclonal against CD158d.

**Target:** CD158d

**Clonality:** Monoclonal

**Clone:** G020

**Reactivity:** Human

**Tested Applications:** FCM

**Host:** Mouse

**Recommended dilutions:** FCM: 20 µl/100 µl of whole blood or 10<sup>6</sup> cells. Optimal dilutions/concentrations should be determined by the end user. The content of a vial (2 ml) is sufficient for 100 tests.

**Conjugation:** PE

**Excitation/Emission:** 565/575

**Laser Line:** 550

**Immunogen:** NK3.3 cells and KIR2DL4-Ig fusion protein.

# Datasheet

Version: 2.0.0  
Revision date: 11 Feb 2025



<b>Isotype:</b>	IgG <sub>1</sub> , Kappa
<b>Storage:</b>	Store in the dark at 2-8°C. Avoid exposure to light. Do not freeze.
<b>UniProt Primary AC:</b>	Q99706 ( <a href="#">UniProt</a> , <a href="#">ExpASY</a> )
<b>Gene Symbol:</b>	KIR2DL4
<b>GeneID:</b>	<a href="#">3805</a>
<b>KEGG:</b>	hsa:3805
<b>String:</b>	<a href="#">9606.ENSP00000339634</a>
<b>Buffer:</b>	Stabilizing PBS solution containing 15 mM sodium azide.
<b>Specificity:</b>	The mouse monoclonal antibody recognizes extracellular portion of CD158d / KIR2DL4, a 45 kDa NK cell marker. Cell surface expression and function of CD158d / KIR2DL4 depends on genotype of particular individuals.
<b>Note:</b>	This product is for research use only.

For Reference Only