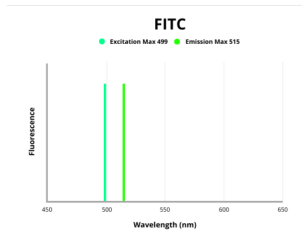


## CD16 Antibody (FITC)

Catalogue No.: abx139438



Fluorescence emission spectra of FITC.

CD16 Antibody is a Mouse Monoclonal against CD16.

<b>Target:</b>	CD16
<b>Clonality:</b>	Monoclonal
<b>Clone:</b>	N106
<b>Reactivity:</b>	Human, Monkey
<b>Tested Applications:</b>	FCM
<b>Host:</b>	Mouse
<b>Recommended dilutions:</b>	FCM: 20 µl/100 µl of whole blood or 10 <sup>6</sup> cells. Optimal dilutions/concentrations should be determined by the end user. The content of a vial (2 ml) is sufficient for 100 tests.
<b>Conjugation:</b>	FITC
<b>Excitation/Emission:</b>	499/515
<b>Laser Line:</b>	488
<b>Immunogen:</b>	Normal Human peripheral blood granulocytes.
<b>Isotype:</b>	IgG <sub>1</sub>
<b>Storage:</b>	Store in the dark at 2-8°C. Avoid exposure to light. Do not freeze.
<b>UniProt Primary AC:</b>	P08637 ( <a href="#">UniProt</a> , <a href="#">ExpASY</a> )
<b>GeneID:</b>	<a href="#">2214</a>

# Datasheet

Version: 5.0.0

Revision date: 12 Mar 2025



**Buffer:** Stabilizing PBS solution containing 15 mM sodium azide.

**Specificity:** The antibody reacts with CD16, a low affinity receptor for aggregated IgG (FcγRIII antigen). CD16 exists in two different isoforms: CD16a (FcγRIIIA; 50-65 kDa; expressed on NK-cells, monocytes and macrophages) and CD16b (FcγRIIIB; 48 kDa; mainly expressed on neutrophils).

**Note:** THIS PRODUCT IS FOR RESEARCH USE ONLY. NOT FOR USE IN DIAGNOSTIC, THERAPEUTIC OR COSMETIC PROCEDURES. NOT FOR HUMAN OR ANIMAL CONSUMPTION.

For Reference Only