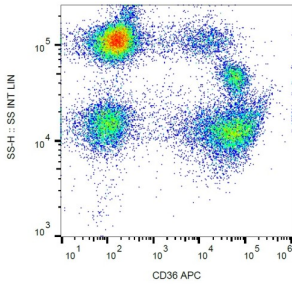
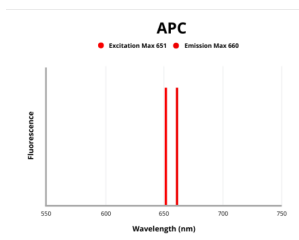


# Platelet Glycoprotein 4 (CD36) Antibody (APC)

Catalogue No.: abx139258



Flow cytometry analysis of Surface staining of human peripheral blood using CD36 Antibody (APC).



Fluorescence emission spectra of APC.

CD36 Antibody is a Mouse Monoclonal against CD36.

**Target:** Platelet Glycoprotein 4 (CD36)

**Clonality:** Monoclonal

**Clone:** P052

**Reactivity:** Human

**Tested Applications:** FCM

**Host:** Mouse

**Recommended dilutions:** FCM: 10 µl/100 µl of whole blood or 10<sup>6</sup> cells. Optimal dilutions/concentrations should be determined by the end user.

**Conjugation:** APC

**Excitation/Emission:** 651/660

**Laser Line:** 647

**Immunogen:** Platelets.

# Datasheet

Version: 2.0.0  
Revision date: 27 Dec 2024



<b>Isotype:</b>	IgG <sub>1</sub>
<b>Storage:</b>	Store in the dark at 2-8°C. Avoid exposure to light. Do not freeze.
<b>UniProt Primary AC:</b>	P16671 ( <a href="#">UniProt</a> , <a href="#">ExPASy</a> )
<b>Gene Symbol:</b>	CD36
<b>GeneID:</b>	<a href="#">948</a>
<b>KEGG:</b>	hsa:948
<b>String:</b>	<a href="#">9606.ENSP00000399421</a>
<b>Buffer:</b>	Stabilizing PBS solution containing 15 mM sodium azide.
<b>Specificity:</b>	<p>The antibody reacts with CD36 (GPIIb), a 85 kDa integral membrane glycoprotein expressed on platelets, macrophages, endothelial cells, early erythroid cells and megakaryocytes. The antibody cross-blocks binding of FITC-labeled standard antibody OKM5.</p> <p>Anti-CD36 antibodies inhibit adhesive functions (e.g. adherence of infected erythrocytes to target cells).</p>
<b>Note:</b>	This product is for research use only.

For Reference Only