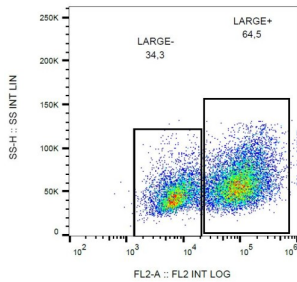
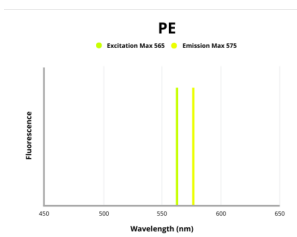


# Glycosyltransferase-Like Protein LARGE1 (LARGE1) Antibody (PE)

Catalogue No.: abx139981



Flow cytometry analysis of LARGE1 in HEK293-LARGE1 transfectants using mouse monoclonal antibody PE.



Fluorescence emission spectra of PE.

LARGE1 Antibody is a Mouse Monoclonal against LARGE1.

**Target:** Glycosyltransferase-Like Protein LARGE1 (LARGE1)

**Clonality:** Monoclonal

**Clone:** X419

**Reactivity:** Human

**Tested Applications:** FCM

**Host:** Mouse

**Recommended dilutions:** FCM: 1-5 µg/ml. Optimal dilutions/concentrations should be determined by the end user.

**Conjugation:** PE

**Excitation/Emission:** 565/575

**Laser Line:** 550

**Immunogen:** Recombinant fragment of Human LARGE1 (amino acids 35-142).

# Datasheet

Version: 3.0.0  
Revision date: 14 Mar 2025



<b>Isotype:</b>	IgG <sub>2b</sub>
<b>Storage:</b>	Store in the dark at 2-8°C. Avoid exposure to light. Do not freeze.
<b>UniProt Primary AC:</b>	O95461 ( <a href="#">UniProt</a> , <a href="#">ExPASy</a> )
<b>Gene Symbol:</b>	LARGE1
<b>GeneID:</b>	<a href="#">9215</a>
<b>KEGG:</b>	hsa:9215
<b>String:</b>	<a href="#">9606.ENSP00000347088</a>
<b>Buffer:</b>	Stabilizing PBS solution containing 15 mM sodium azide.
<b>Specificity:</b>	The mouse monoclonal antibody recognizes human LARGE1, a glycosyltransferase localizing mainly to the Golgi apparatus. Crossreactivity with LARGE2 was not determined.
<b>Concentration:</b>	0.1 mg/ml
<b>Note:</b>	THIS PRODUCT IS FOR RESEARCH USE ONLY. NOT FOR USE IN DIAGNOSTIC, THERAPEUTIC OR COSMETIC PROCEDURES. NOT FOR HUMAN OR ANIMAL CONSUMPTION.

For Reference Only