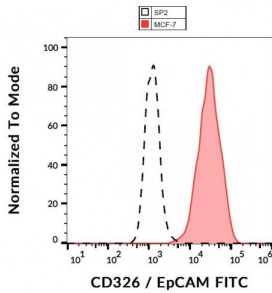
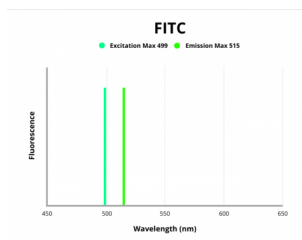


## Epithelial Cell Adhesion Molecule (EPCAM) Antibody (FITC)

Catalogue No.: abx139728



Surface staining of human MCF-7 cell line using human CD326 / EpCAM Antibody (FITC).



Fluorescence emission spectra of FITC.

EPCAM/CD326 Antibody (APC) is a Mouse Monoclonal Antibody against EPCAM/CD326 conjugated to FITC.

**Target:** Epithelial Cell Adhesion Molecule (EPCAM)

**Clonality:** Monoclonal

**Clone:** C365

**Reactivity:** Human

**Tested Applications:** FCM

**Host:** Mouse

**Recommended dilutions:** FCM: 20 µl/100 µl of whole blood or 10<sup>6</sup> cells. Optimal dilutions/concentrations should be determined by the end user. The content of a vial (2 ml) is sufficient for 100 tests.

**Conjugation:** FITC

**Excitation/Emission:** 499/515

**Laser Line:** 488

**Immunogen:** Small cell lung carcinoma cell line H69.

# Datasheet

Version: 2.0.0  
Revision date: 29 May 2024



<b>Isotype:</b>	IgG <sub>1</sub>
<b>Storage:</b>	Store in the dark at 2-8°C. Avoid exposure to light. Do not freeze.
<b>UniProt Primary AC:</b>	P16422 ( <a href="#">UniProt</a> , <a href="#">ExPASy</a> )
<b>Gene Symbol:</b>	EPCAM
<b>GeneID:</b>	<a href="#">4072</a>
<b>KEGG:</b>	hsa:4072
<b>String:</b>	<a href="#">9606.ENSP00000263735</a>
<b>Buffer:</b>	Stabilizing PBS solution containing 15 mM sodium azide.
<b>Specificity:</b>	The mouse monoclonal antibody recognizes an epitope within EGF-like domain I of CD326 / EpCAM, a marker of epithelial lineages. This antibody strongly stains various normal epithelial cells and carcinomas.
<b>Note:</b>	This product is for research use only.

For Reference Only