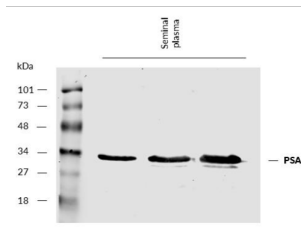
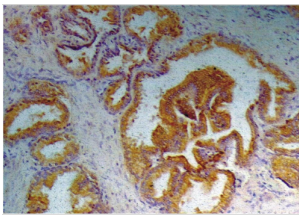


## Prostate-Specific Antigen / PSA (KLK3) Antibody

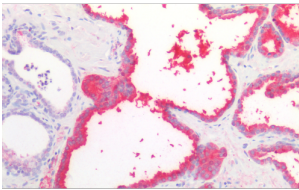
Catalogue No.: abx140217



WB analysis of Human seminal plasma under reducing conditions, using KLK3 antibody 5 µg/ml, followed by IRDye800-conjugated Mouse secondary antibody. Approximate band for Human KLK3 was detected at 30 kDa.



IHC-P analysis of Human prostate tissue, using KLK3 antibody.



IHC-P analysis of Human prostate tissue using KLK3 antibody.

Prostate-Specific antigen Antibody is a Mouse Monoclonal against Prostate-Specific antigen.

**Target:** Prostate-Specific Antigen / PSA (KLK3)

**Clonality:** Monoclonal

**Clone:** F642

**Reactivity:** Human

**Tested Applications:** ELISA, WB, IHC

**Host:** Mouse

**Recommended dilutions:** WB: 2-5 µg/ml. Optimal dilutions/concentrations should be determined by the end user.

# Datasheet

Version: 3.0.0  
Revision date: 22 Dec 2024



<b>Conjugation:</b>	Unconjugated
<b>Immunogen:</b>	30 KDa protein fraction prepared from Human seminal plasma.
<b>Isotype:</b>	IgG <sub>1</sub>
<b>Purity:</b>	> 95% (SDS-PAGE)
<b>Purification:</b>	Purified by Protein A affinity chromatography.
<b>Storage:</b>	Store at 2-8°C. Do not freeze.
<b>UniProt Primary AC:</b>	P07288 ( <a href="#">UniProt</a> , <a href="#">ExPASy</a> )
<b>Gene Symbol:</b>	KLK3
<b>GeneID:</b>	<a href="#">354</a>
<b>OMIM:</b>	<a href="#">176820</a>
<b>HGNC:</b>	6364
<b>KEGG:</b>	hsa:354
<b>Ensembl:</b>	ENSG00000142515
<b>String:</b>	<a href="#">9606.ENSP00000314151</a>
<b>Buffer:</b>	PBS solution with 15 mM sodium azide.
<b>Specificity:</b>	The antibody reacts with prostate-specific antigen (PSA), a protein produced by normal prostate cells. The highest amounts of PSA are found in the seminal fluid.
<b>Concentration:</b>	1 mg/ml
<b>Note:</b>	This product is for research use only.