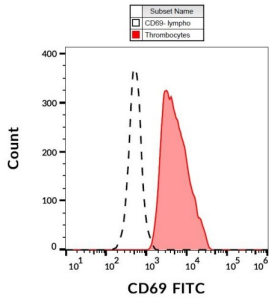
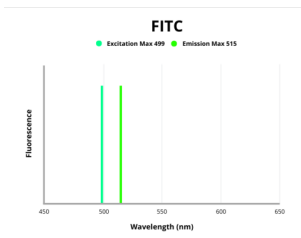


Early Activation Antigen CD69 (CD69) Antibody (FITC)

Catalogue No.: abx139324



Surface staining of human PHA-activated peripheral blood using CD69 antibody (FITC).



Fluorescence emission spectra of FITC.

CD69 Antibody is a Mouse Monoclonal against CD69.

Target: Early Activation Antigen CD69 (CD69)

Clonality: Monoclonal

Clone: B082

Reactivity: Human

Tested Applications: FCM

Host: Mouse

Recommended dilutions: FCM: 20 µl/100 µl of whole blood or 10⁶ cells. Validated in IHC-F. Optimal dilutions/concentrations should be determined by the end user. The content of a vial (2 ml) is sufficient for 100 tests.

Conjugation: FITC

Excitation/Emission: 499/515

Laser Line: 488

Immunogen: anti-µ-stimulated Human B lymphocytes.

Datasheet

Version: 2.0.0
Revision date: 14 Jan 2025



Isotype:	IgG ₁
Storage:	Store in the dark at 2-8°C. Avoid exposure to light. Do not freeze.
UniProt Primary AC:	Q07108 (UniProt , ExpASY)
Gene Symbol:	CD69
GeneID:	969
KEGG:	hsa:969
String:	9606.ENSP00000228434
Buffer:	Stabilizing PBS solution containing 15 mM sodium azide.
Specificity:	The antibody recognizes CD69, an lymphocyte early activation marker.
Note:	This product is for research use only.

For Reference Only