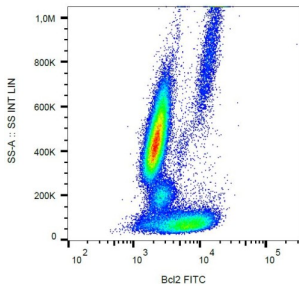
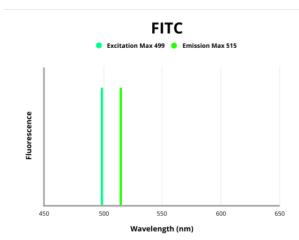


# Apoptosis Regulator Bcl-2 (BCL2) Antibody (FITC)

Catalogue No.: abx139067



Intracellular staining of human peripheral blood with anti-Bcl2 FITC.



Fluorescence emission spectra of FITC.

BCL2 Antibody is a Mouse Monoclonal against BCL2.

**Target:** Apoptosis Regulator Bcl-2 (BCL2)

**Clonality:** Monoclonal

**Clone:** L259

**Reactivity:** Human

**Tested Applications:** FCM

**Host:** Mouse

**Recommended dilutions:** FCM: 4 µl/100 µl of whole blood or 10<sup>6</sup> cells. Optimal dilutions/concentrations should be determined by the end user.

**Conjugation:** FITC

**Excitation/Emission:** 499/515

**Laser Line:** 488

**Immunogen:** Synthetic peptide corresponding to the amino acids 41-54 of Human Bcl2.

# Datasheet

Version: 1.0.0  
Revision date: 28 Jan 2025



<b>Isotype:</b>	IgG <sub>1</sub>
<b>Storage:</b>	Store in the dark at 2-8°C. Avoid exposure to light. Do not freeze.
<b>UniProt Primary AC:</b>	P10415 ( <a href="#">UniProt</a> , <a href="#">ExPASy</a> )
<b>Gene Symbol:</b>	BCL2
<b>GeneID:</b>	<a href="#">596</a>
<b>OMIM:</b>	<a href="#">151430</a>
<b>HGNC:</b>	990
<b>KEGG:</b>	hsa:596
<b>Ensembl:</b>	ENSG00000171791
<b>String:</b>	<a href="#">9606.ENSP00000381185</a>
<b>Buffer:</b>	Stabilizing PBS solution containing 15 mM sodium azide.
<b>Specificity:</b>	The mouse monoclonal antibody recognizes Bcl2, a 26 kDa protooncogen with anti-apoptotic effect, expressed in outer mitochondrial membrane, endoplasmic reticulum and nuclear envelope.
<b>Note:</b>	This product is for research use only.

For Reference Only