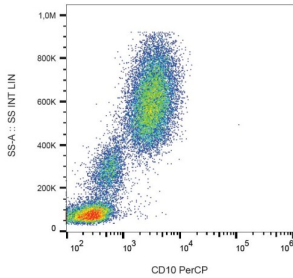
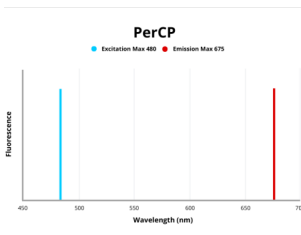


Neprilysin / NEP (MME) Antibody (PerCP)

Catalogue No.: abx139753



Surface staining of human peripheral blood with anti-human CD10 PerCP.



Fluorescence emission spectra of PerCP.

CD10 Antibody is a Mouse Monoclonal against CD10.

Target: Neprilysin / NEP (MME)

Clonality: Monoclonal

Clone: D001

Reactivity: Human

Tested Applications: FCM

Host: Mouse

Recommended dilutions: FCM: 10 µl/100 µl of whole blood or 10⁶ cells. Optimal dilutions/concentrations should be determined by the end user.

Conjugation: PerCP

Excitation/Emission: 480/675

Laser Line: 488

Immunogen: NALM-6 Human pre-B cell line.

Datasheet

Version: 1.0.0
Revision date: 14 Jan 2025



Isotype:	IgG ₁
Storage:	Store in the dark at 2-8°C. Avoid exposure to light. Do not freeze.
UniProt Primary AC:	P08473 (UniProt , ExPASy)
Gene Symbol:	MME
GeneID:	4311
KEGG:	hsa:4311
String:	9606.ENSP00000418525
Buffer:	Stabilizing PBS solution containing 15 mM sodium azide.
Specificity:	The antibody reacts with CD10 antigen (CALLA - Common acute lymphatic leukemia antigen), a 100 kDa type II integral membrane protein.
Note:	This product is for research use only.

For Reference Only