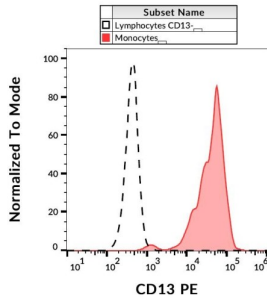
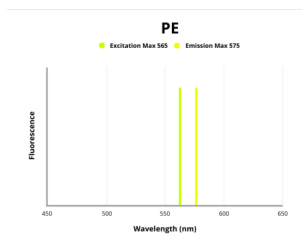


Aminopeptidase N (ANPEP) Antibody (PE)

Catalogue No.: abx139040



Surface staining of human peripheral blood leukocytes using CD13 Antibody (PE).



Fluorescence emission spectra of PE.

Aminopeptidase N / CD13 (ANPEP) Antibody is a Mouse Monoclonal against CD13.

- Target:** Aminopeptidase N (ANPEP)
- Clonality:** Monoclonal
- Clone:** Q678
- Reactivity:** Human, Monkey
- Tested Applications:** FCM
- Host:** Mouse
- Recommended dilutions:** FCM: 20 µl/100 µl of whole blood or 10⁶ cells. Validated in IHC-F. Optimal dilutions/concentrations should be determined by the end user. The content of a vial (2 ml) is sufficient for 100 tests.
- Conjugation:** PE
- Excitation/Emission:** 565/575
- Laser Line:** 550
- Immunogen:** Human AML cells.

Datasheet

Version: 3.0.0
Revision date: 10 Mar 2025



Isotype:	IgG ₁
Storage:	Store in the dark at 2-8°C. Avoid exposure to light. Do not freeze.
UniProt Primary AC:	P15144 (UniProt , ExPASy)
Gene Symbol:	ANPEP
GeneID:	290
OMIM:	151530
HGNC:	500
KEGG:	hsa:290
Ensembl:	ENSG00000166825
String:	9606.ENSP00000300060
Buffer:	Stabilizing PBS solution containing 15 mM sodium azide.
Specificity:	The antibody recognises the human CD13 cell surface glycoprotein, a 150 kDa molecule expressed on granulocytes, endothelial cells, epithelial cells and myeloid progenitors.
Note:	THIS PRODUCT IS FOR RESEARCH USE ONLY. NOT FOR USE IN DIAGNOSTIC, THERAPEUTIC OR COSMETIC PROCEDURES. NOT FOR HUMAN OR ANIMAL CONSUMPTION.

For Reference Only