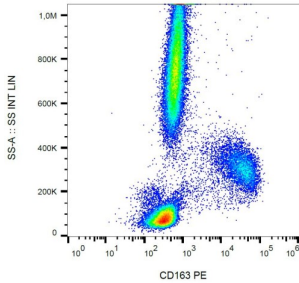
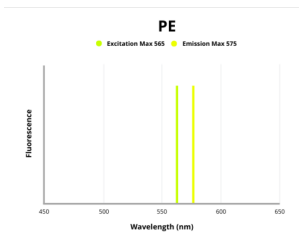


Scavenger Receptor Cysteine-Rich Type 1 Protein M130 (CD163) Antibody (PE)

Catalogue No.: abx139984



Surface staining of human peripheral blood using anti-human CD163 PE.



Fluorescence emission spectra of PE.

CD163 Antibody is a Mouse Monoclonal against CD163.

Target:	Scavenger Receptor Cysteine-Rich Type 1 Protein M130 (CD163)
Clonality:	Monoclonal
Clone:	M011
Reactivity:	Human
Tested Applications:	FCM
Host:	Mouse
Recommended dilutions:	FCM: 10 µl/100 µl of whole blood or 10 ⁶ cells. Validated in IHC-F. Optimal dilutions/concentrations should be determined by the end user.
Conjugation:	PE
Excitation/Emission:	565/575
Laser Line:	550

Datasheet

Version: 1.0.0
Revision date: 23 Nov 2024



Immunogen:	Hairy cell leukaemia cells.
Isotype:	IgG ₁ , Kappa
Storage:	Store in the dark at 2-8°C. Avoid exposure to light. Do not freeze.
UniProt Primary AC:	Q86VB7 (UniProt , ExpASY)
Gene Symbol:	CD163
GeneID:	9332
KEGG:	hsa:9332
String:	9606.ENSP00000352071
Buffer:	Stabilizing PBS solution containing 15 mM sodium azide.
Specificity:	The mouse monoclonal antibody recognizes CD163, an approximately 130 kDa high affinity scavenger receptor expressed mainly on monocytes and macrophages, which binds hemoglobin-haptoglobin complex.
Note:	This product is for research use only.

For Reference Only