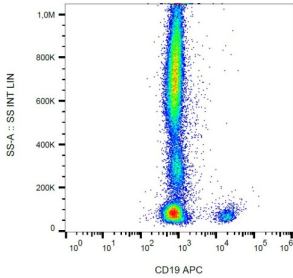
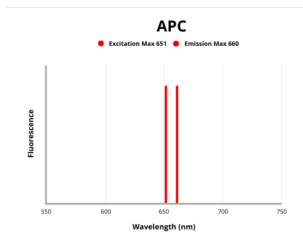


## B-Lymphocyte Antigen CD19 (CD19) Antibody (APC)

Catalogue No.: abx140192



Surface staining of human peripheral blood leukocytes with anti-human CD19 APC.



Fluorescence emission spectra of APC.

CD19 Antibody is a Mouse Monoclonal against CD19.

**Target:** B-Lymphocyte Antigen CD19 (CD19)

**Clonality:** Monoclonal

**Clone:** K763

**Reactivity:** Human

**Tested Applications:** FCM

**Host:** Mouse

**Recommended dilutions:** FCM: 10 µl/100 µl of whole blood or 10<sup>6</sup> cells. Optimal dilutions/concentrations should be determined by the end user.

**Conjugation:** APC

**Excitation/Emission:** 651/660

**Laser Line:** 647

**Immunogen:** Human CCL (chronic lymphocytic leukemia) cells.

# Datasheet

Version: 3.0.0  
Revision date: 12 Mar 2025



<b>Isotype:</b>	IgG <sub>1</sub> Kappa
<b>Storage:</b>	Store in the dark at 2-8°C. Avoid exposure to light. Do not freeze.
<b>UniProt Primary AC:</b>	P15391 ( <a href="#">UniProt</a> , <a href="#">ExPASy</a> )
<b>Gene Symbol:</b>	CD19
<b>GeneID:</b>	<a href="#">930</a>
<b>KEGG:</b>	hsa:930
<b>String:</b>	<a href="#">9606.ENSP00000437940</a>
<b>Buffer:</b>	Stabilizing PBS solution containing 15 mM sodium azide.
<b>Specificity:</b>	The mouse monoclonal antibody recognizes CD19 (B4), a 95 kDa type I transmembrane glycoprotein of immunoglobulin superfamily, expressed on B lymphocytes and follicular dendritic cells; it is lost on plasma cells.
<b>Note:</b>	THIS PRODUCT IS FOR RESEARCH USE ONLY. NOT FOR USE IN DIAGNOSTIC, THERAPEUTIC OR COSMETIC PROCEDURES. NOT FOR HUMAN OR ANIMAL CONSUMPTION.

For Reference Only