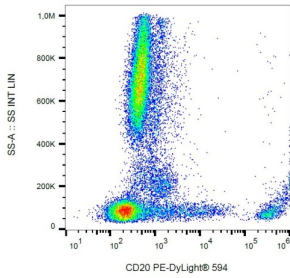
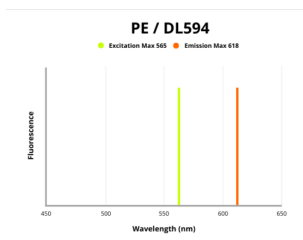


# B-Lymphocyte Antigen CD20 (MS4A1) Antibody (PE / DL594)

Catalogue No.: abx139199



Surface staining of human peripheral blood with anti-CD20 (2H7) PE-DyLight 594.



Fluorescence emission spectra of PE/DL 594.

CD20 Antibody is a Mouse Monoclonal against CD20.

**Target:** B-Lymphocyte Antigen CD20 (MS4A1)

**Clonality:** Monoclonal

**Clone:** C333

**Reactivity:** Human, Monkey

**Tested Applications:** FCM

**Host:** Mouse

**Recommended dilutions:** Validated in IHC-F. Optimal dilutions/concentrations should be determined by the end user.

**Conjugation:** PE / DL594

**Excitation/Emission:** 565/618

**Laser Line:** 550

**Immunogen:** Human tonsillar B cells.

# Datasheet

Version: 3.0.0  
Revision date: 03 Dec 2024



<b>Isotype:</b>	IgG <sub>2b</sub> Kappa
<b>Storage:</b>	Store in the dark at 2-8°C. Avoid exposure to light. Do not freeze.
<b>UniProt Primary AC:</b>	P11836 ( <a href="#">UniProt</a> , <a href="#">ExPASy</a> )
<b>Gene Symbol:</b>	CD20
<b>GeneID:</b>	<a href="#">931</a>
<b>KEGG:</b>	hsa:931
<b>String:</b>	<a href="#">9606.ENSP00000314620</a>
<b>Buffer:</b>	Stabilizing PBS solution containing 15 mM sodium azide.
<b>Specificity:</b>	The mouse monoclonal antibody recognizes CD20 (B1, Bp35), a 33-37 kDa non-glycosylated membrane receptor with four transmembrane domains, expressed on pre-B lymphocytes, resting and activated B cells (not plasma cells), follicular dendritic cells, and at low levels on peripheral blood T lymphocytes.
<b>Note:</b>	This product is for research use only.

For Reference Only