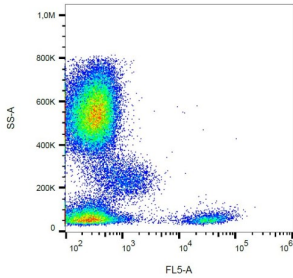
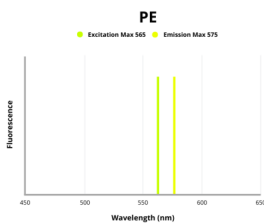


Complement Receptor 2 / CD21 (CR2) Antibody (PE)

Catalogue No.: abx139376



Surface staining of human peripheral blood leukocytes with anti-CD21 PE.



Fluorescence emission spectra of PE.

CD21 Antibody is a Mouse Monoclonal against CD21.

Target:	Complement Receptor 2 / CD21 (CR2)
Clonality:	Monoclonal
Clone:	F473
Reactivity:	Human, Pig, Cow, Dog
Tested Applications:	FCM
Host:	Mouse
Recommended dilutions:	FCM: 20 µl/100 µl of whole blood or 10 ⁶ cells. Validated in IHC-F. Optimal dilutions/concentrations should be determined by the end user. The content of a vial (2 ml) is sufficient for 100 tests.
Conjugation:	PE
Excitation/Emission:	565/575
Laser Line:	550
Immunogen:	IM9 Human B-lymphoblastoid cell line.

Datasheet

Version: 1.0.0
Revision date: 04 Dec 2024



Isotype:	IgG ₁
Storage:	Store in the dark at 2-8°C. Avoid exposure to light. Do not freeze.
UniProt Primary AC:	P20023 (UniProt , ExPASy)
Gene Symbol:	CR2
GeneID:	1380
Buffer:	Stabilizing PBS solution containing 15 mM sodium azide.
Specificity:	The antibody reacts with CD21 (CR2), a 145 kDa transmembrane glycoprotein (complement C3d receptor - C3dR) expressed on B lymphocytes, follicular dendritic cells, some epithelial cells and a subsets of T lymphocytes. It is not expressed on immature B cells.
Note:	This product is for research use only.

For Reference Only