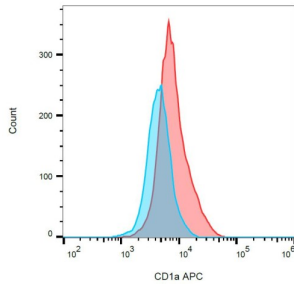
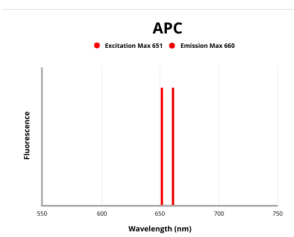


T-cell Surface Glycoprotein CD1a (CD1A) Antibody (APC)

Catalogue No.: abx139082



Detection of human CD1a on the surface of MOLT-4 (partially positive, red) and SP2 cells (negative, blue), determined using anti-human CD1a APC.



Fluorescence emission spectra of APC.

CD1a Antibody is a Mouse Monoclonal against CD1a.

Target: T-cell Surface Glycoprotein CD1a (CD1A)

Clonality: Monoclonal

Clone: P392

Reactivity: Human

Tested Applications: FCM

Host: Mouse

Recommended dilutions: FCM: 10 µl/100 µl of whole blood or 10⁶ cells. Validated in IHC-F. Optimal dilutions/concentrations should be determined by the end user.

Conjugation: APC

Excitation/Emission: 651/660

Laser Line: 647

Immunogen: Human Thymocytes.

Datasheet

Version: 3.0.0
Revision date: 08 Sep 2024



Isotype:	IgG ₁
Storage:	Store in the dark at 2-8°C. Avoid exposure to light. Do not freeze.
UniProt Primary AC:	P06126 (UniProt , ExPASy)
Gene Symbol:	CD1A
GeneID:	909
KEGG:	hsa:909
String:	9606.ENSP00000289429
Buffer:	Stabilizing PBS solution containing 15 mM sodium azide.
Specificity:	<p>The antibody reacts with CD1a (T6), a 49 kDa polypeptide associated with beta2-microglobulin expressed on cortical thymocytes (strongly), Langerhans cells, dendritic cells and some T cell leukemias and lymphomas.</p> <p>The antibody does not react with peripheral blood T and B lymphocytes, monocytes, granulocytes, platelets and erythrocytes.</p>
Note:	This product is for research use only.

For Reference Only