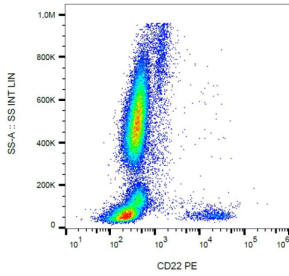
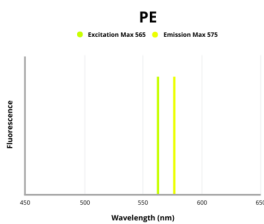


B-Cell Receptor CD22 / SIGLEC2 (CD22) Antibody (PE)

Catalogue No.: abx139204



Surface staining of CD22 in human peripheral blood cells with CD22 Antibody (PE).



Fluorescence emission spectra of PE.

CD22 Antibody is a Mouse Monoclonal against CD22.

Target: B-Cell Receptor CD22 / SIGLEC2 (CD22)

Clonality: Monoclonal

Clone: F305

Reactivity: Human

Tested Applications: FCM

Host: Mouse

Recommended dilutions: FCM: 20 μ l/100 μ l of whole blood or 10^6 cells. Optimal dilutions/concentrations should be determined by the end user. The content of a vial (2 ml) is sufficient for 100 tests.

Conjugation: PE

Excitation/Emission: 565/575

Laser Line: 550

Immunogen: Human cell line Reh.

Datasheet

Version: 1.0.0
Revision date: 03 Dec 2024



Isotype:	IgG ₁
Storage:	Store in the dark at 2-8°C. Avoid exposure to light. Do not freeze.
UniProt Primary AC:	P20273 (UniProt , ExPASy)
Gene Symbol:	CD22
GeneID:	933
Buffer:	Stabilizing PBS solution containing 15 mM sodium azide.
Specificity:	The antibody reacts with CD22 (BL-CAM), a 130 kDa type I transmembrane glycoprotein (immunoglobulin superfamily) expressed in the cytoplasm of pro-B and pre-B lymphocytes, and on the surface of mature and activated B lymphocytes; it is lost on plasma cells, peripheral blood T lymphocytes, granulocytes and monocytes.
Note:	This product is for research use only.

For Reference Only