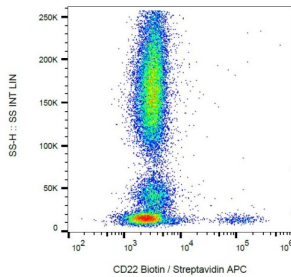


## CD22 Antibody (Biotin)

Catalogue No.: abx139208



Surface staining of human peripheral blood cells with anti-CD22 (MEM-01) biotin / streptavidin-APC.

CD22 Antibody is a Mouse Monoclonal against CD22.

<b>Target:</b>	CD22
<b>Clonality:</b>	Monoclonal
<b>Clone:</b>	X902
<b>Reactivity:</b>	Human, Monkey
<b>Tested Applications:</b>	WB, FCM, IP
<b>Host:</b>	Mouse
<b>Recommended dilutions:</b>	Optimal dilutions/concentrations should be determined by the end user.
<b>Conjugation:</b>	Biotin
<b>Immunogen:</b>	Raji Burkitt's lymphoma cell line.
<b>Isotype:</b>	IgG <sub>1</sub>
<b>Storage:</b>	Store at 2-8°C. Do not freeze.
<b>UniProt Primary AC:</b>	P20273 ( <a href="#">UniProt</a> , <a href="#">ExPASy</a> )
<b>Gene Symbol:</b>	CD22
<b>GeneID:</b>	<a href="#">933</a>
<b>Buffer:</b>	PBS solution with 15 mM sodium azide.

# Datasheet

Version: 1.0.0

Revision date: 04 Dec 2024

**Specificity:**

The antibody reacts with CD22 (BL-CAM), a 130 kDa type I transmembrane glycoprotein (immunoglobulin superfamily) expressed in the cytoplasm of pro-B and pre-B lymphocytes, and on the surface of mature and activated B lymphocytes; it is lost on plasma cells, peripheral blood T lymphocytes, granulocytes and monocytes.

The antibody cross-blocks the antibody OTH228 that recognizes uniquely epitope "E"; it does not cross-block antibodies RFB-4, CLB22/1 and CLB-BLy1.

**Concentration:**

1 mg/ml

**Note:**

This product is for research use only.

For Reference Only