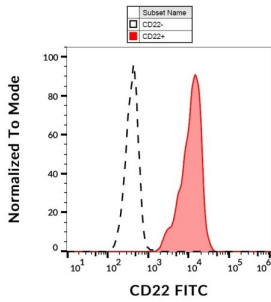
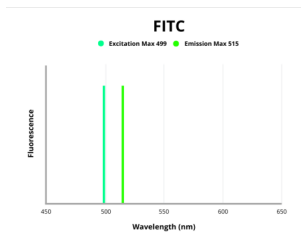


# CD22 Antibody (FITC)

Catalogue No.: abx139206



Surface staining of CD22 in human peripheral blood cells using CD22 Antibody (FITC).



Fluorescence emission spectra of FITC.

CD22 Antibody is a Mouse Monoclonal against CD22.

**Target:** CD22

**Clonality:** Monoclonal

**Clone:** F305

**Reactivity:** Human

**Tested Applications:** FCM

**Host:** Mouse

**Recommended dilutions:** FCM: 20 µl/100 µl of whole blood or 10<sup>6</sup> cells. Optimal dilutions/concentrations should be determined by the end user. The content of a vial (2 ml) is sufficient for 100 tests.

**Conjugation:** FITC

**Excitation/Emission:** 499/515

**Laser Line:** 488

**Immunogen:** Human cell line Reh.

# Datasheet

Version: 3.0.0  
Revision date: 12 Mar 2025



<b>Isotype:</b>	IgG <sub>1</sub>
<b>Storage:</b>	Store in the dark at 2-8°C. Avoid exposure to light. Do not freeze.
<b>UniProt Primary AC:</b>	P20273 ( <a href="#">UniProt</a> , <a href="#">ExPASy</a> )
<b>Gene Symbol:</b>	CD22
<b>GeneID:</b>	<a href="#">933</a>
<b>Buffer:</b>	Stabilizing PBS solution containing 15 mM sodium azide.
<b>Specificity:</b>	The antibody reacts with CD22 (BL-CAM), a 130 kDa type I transmembrane glycoprotein (immunoglobulin superfamily) expressed in the cytoplasm of pro-B and pre-B lymphocytes, and on the surface of mature and activated B lymphocytes; it is lost on plasma cells, peripheral blood T lymphocytes, granulocytes and monocytes.
<b>Note:</b>	THIS PRODUCT IS FOR RESEARCH USE ONLY. NOT FOR USE IN DIAGNOSTIC, THERAPEUTIC OR COSMETIC PROCEDURES. NOT FOR HUMAN OR ANIMAL CONSUMPTION.

For Reference Only