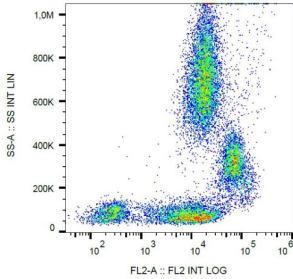
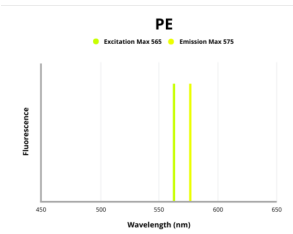


# Platelet And Endothelial Cell Adhesion Molecule 1 (CD31) Antibody (PE)

Catalogue No.: abx139809



Surface staining of human peripheral blood with anti-human CD31 PE.



Fluorescence emission spectra of PE.

CD31 Antibody is a Mouse Monoclonal against CD31.

**Target:** Platelet And Endothelial Cell Adhesion Molecule 1 (CD31)

**Clonality:** Monoclonal

**Clone:** S860

**Reactivity:** Human

**Tested Applications:** FCM

**Host:** Mouse

**Recommended dilutions:** FCM: 20 µl/100 µl of whole blood or 10<sup>6</sup> cells. Optimal dilutions/concentrations should be determined by the end user. The content of a vial (2 ml) is sufficient for 100 tests.

**Conjugation:** PE

**Excitation/Emission:** 565/575

**Laser Line:** 550

# Datasheet

Version: 3.0.0  
Revision date: 11 Mar 2025



<b>Immunogen:</b>	Leukocytes of patient suffering from LGL-type leukaemia.
<b>Isotype:</b>	IgG <sub>1</sub>
<b>Storage:</b>	Store in the dark at 2-8°C. Avoid exposure to light. Do not freeze.
<b>UniProt Primary AC:</b>	P16284 ( <a href="#">UniProt</a> , <a href="#">ExpASY</a> )
<b>Gene Symbol:</b>	PECAM1
<b>GeneID:</b>	<a href="#">5175</a>
<b>KEGG:</b>	hsa:5175
<b>String:</b>	<a href="#">9606.ENSP00000457421</a>
<b>Buffer:</b>	Stabilizing PBS solution containing 15 mM sodium azide.
<b>Specificity:</b>	The antibody reacts with CD31 (PECAM-1), a 130-140 kDa type I transmembrane glycoprotein expressed on monocytes, platelets, granulocytes, endothelial cells and stem cells of the myeloid lineage.
<b>Note:</b>	THIS PRODUCT IS FOR RESEARCH USE ONLY. NOT FOR USE IN DIAGNOSTIC, THERAPEUTIC OR COSMETIC PROCEDURES. NOT FOR HUMAN OR ANIMAL CONSUMPTION.

For Reference Only