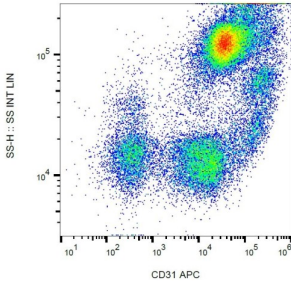
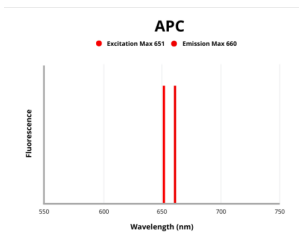


Platelet And Endothelial Cell Adhesion Molecule 1 (CD31) Antibody (APC)

Catalogue No.: abx139812



Surface staining of human peripheral blood with anti-human CD31 APC.



Fluorescence emission spectra of APC.

CD31 Antibody is a Mouse Monoclonal against CD31.

Target: Platelet And Endothelial Cell Adhesion Molecule 1 (CD31)

Clonality: Monoclonal

Clone: S860

Reactivity: Human

Tested Applications: FCM

Host: Mouse

Recommended dilutions: FCM: 10 µl/100 µl of whole blood or 10⁶ cells. Optimal dilutions/concentrations should be determined by the end user.

Conjugation: APC

Excitation/Emission: 651/660

Laser Line: 647

Datasheet

Version: 2.0.0
Revision date: 29 Dec 2024



Immunogen:	Leukocytes of patient suffering from LGL-type leukaemia.
Isotype:	IgG ₁
Storage:	Store in the dark at 2-8°C. Avoid exposure to light. Do not freeze.
UniProt Primary AC:	P16284 (UniProt , ExpASY)
Gene Symbol:	PECAM1
GeneID:	5175
KEGG:	hsa:5175
String:	9606.ENSP00000457421
Buffer:	Stabilizing PBS solution containing 15 mM sodium azide.
Specificity:	The antibody reacts with CD31 (PECAM-1), a 130-140 kDa type I transmembrane glycoprotein expressed on monocytes, platelets, granulocytes, endothelial cells and stem cells of the myeloid lineage.
Note:	This product is for research use only.

For Reference Only