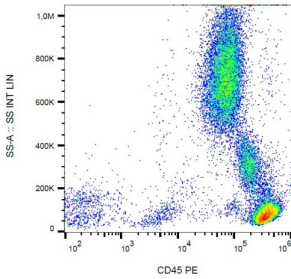
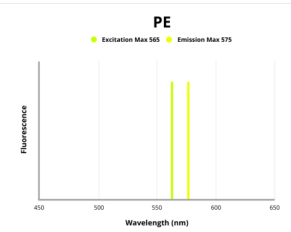


# Receptor-Type Tyrosine-Protein Phosphatase C / CD45 (PTPRC) Antibody (PE)

Catalogue No.: abx139838



Surface staining of human peripheral blood cells with anti-human CD45 PE.



Fluorescence emission spectra of PE.

CD45 Antibody is a Mouse Monoclonal against CD45.

**Target:** Receptor-Type Tyrosine-Protein Phosphatase C / CD45 (PTPRC)

**Clonality:** Monoclonal

**Clone:** B553

**Reactivity:** Human

**Tested Applications:** FCM

**Host:** Mouse

**Recommended dilutions:** FCM: 20 µl/100 µl of whole blood or 10<sup>6</sup> cells. Validated in IHC-P and ICC. Optimal dilutions/concentrations should be determined by the end user. The content of a vial (2 ml) is sufficient for 100 tests.

**Conjugation:** PE

**Excitation/Emission:** 565/575

# Datasheet

Version: 3.0.0  
Revision date: 13 Mar 2025



<b>Laser Line:</b>	550
<b>Immunogen:</b>	Human thymocytes and T lymphocytes.
<b>Isotype:</b>	IgG <sub>1</sub>
<b>Storage:</b>	Store in the dark at 2-8°C. Avoid exposure to light. Do not freeze.
<b>UniProt Primary AC:</b>	P08575 ( <a href="#">UniProt</a> , <a href="#">ExPASy</a> )
<b>Gene Symbol:</b>	PTPRC
<b>GeneID:</b>	<a href="#">5788</a>
<b>KEGG:</b>	hsa:5788
<b>String:</b>	<a href="#">9606.ENSP00000411355</a>
<b>Buffer:</b>	Stabilizing PBS solution containing 15 mM sodium azide.
<b>Specificity:</b>	The antibody reacts with all alternative forms of human CD45 antigen (Leukocyte Common Antigen), a 180-220 kDa single chain type I transmembrane protein expressed at high level on all cells of hematopoietic origin, except erythrocytes and platelets.
<b>Note:</b>	THIS PRODUCT IS FOR RESEARCH USE ONLY. NOT FOR USE IN DIAGNOSTIC, THERAPEUTIC OR COSMETIC PROCEDURES. NOT FOR HUMAN OR ANIMAL CONSUMPTION.

For Reference Only