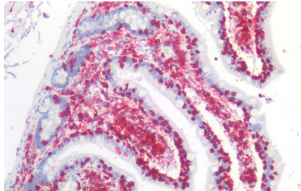
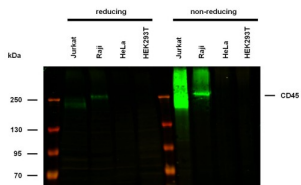


Receptor-Type Tyrosine-Protein Phosphatase C / CD45 (PTPRC) Antibody

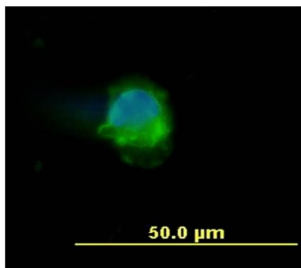
Catalogue No.: abx139820



IHC analysis of Human Small Intestine tissue, stained with anti-CD45.



WB analysis of different whole cell extracts, using anti-CD45.



ICC analysis of Human Peripheral Blood Mononuclear cells, using anti-CD45 (green). DNA visualised by DAPI (blue).

CD45 Antibody is a Mouse Monoclonal against CD45.

| | |
|-----------------------------|---|
| Target: | Receptor-Type Tyrosine-Protein Phosphatase C / CD45 (PTPRC) |
| Clonality: | Monoclonal |
| Clone: | B553 |
| Reactivity: | Human |
| Tested Applications: | WB, IHC, IF/ICC, FCM, IP |
| Host: | Mouse |

Datasheet

Version: 3.0.0
Revision date: 13 Mar 2025



Recommended dilutions: WB (Non-reducing, 6-7% gel): 1 µg/ml, IF/ICC: 10 µg/ml, FCM: 1 µg/ml. Validated in IHC-P and ICC. Optimal dilutions/concentrations should be determined by the end user.

Conjugation: Unconjugated

Immunogen: Human thymocytes and T lymphocytes.

Isotype: IgG₁

Purity: > 95% (SDS-PAGE)

Purification: Purified by Protein A affinity chromatography.

Storage: Store at 2-8°C. Do not freeze.

UniProt Primary AC: P08575 ([UniProt](#), [ExPASy](#))

Gene Symbol: PTPRC

GenelD: [5788](#)

KEGG: hsa:5788

String: [9606.ENSP00000411355](#)

Buffer: PBS solution with 15 mM sodium azide.

Specificity: The antibody reacts with all alternative forms of human CD45 antigen (Leukocyte Common Antigen), a 180-220 kDa single chain type I transmembrane protein expressed at high level on all cells of hematopoietic origin, except erythrocytes and platelets.

Concentration: 1 mg/ml

Note: THIS PRODUCT IS FOR RESEARCH USE ONLY. NOT FOR USE IN DIAGNOSTIC, THERAPEUTIC OR COSMETIC PROCEDURES. NOT FOR HUMAN OR ANIMAL CONSUMPTION.