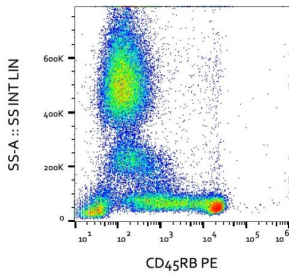
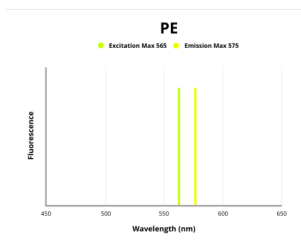


## CD45RB Antigen (CD45RB/PTPRC) Antibody (PE)

Catalogue No.: abx139835



Surface staining of human peripheral blood using CD45RB Antibody (PE).



Fluorescence emission spectra of PE.

CD45RB Antibody is a Mouse Monoclonal against CD45RB.

<b>Target:</b>	CD45RB Antigen (CD45RB/PTPRC)
<b>Clonality:</b>	Monoclonal
<b>Clone:</b>	R606
<b>Reactivity:</b>	Human, Monkey
<b>Tested Applications:</b>	FCM
<b>Host:</b>	Mouse
<b>Recommended dilutions:</b>	FCM: 20 µl/100 µl of whole blood or 10 <sup>6</sup> cells. Validated in IHC-P. Optimal dilutions/concentrations should be determined by the end user. The content of a vial (2 ml) is sufficient for 100 tests.
<b>Conjugation:</b>	PE
<b>Excitation/Emission:</b>	565/575
<b>Laser Line:</b>	550
<b>Immunogen:</b>	Human thymocytes and T lymphocytes.

# Datasheet

Version: 3.0.0  
Revision date: 13 Mar 2025



<b>Isotype:</b>	IgG <sub>1</sub>
<b>Storage:</b>	Store in the dark at 2-8°C. Avoid exposure to light. Do not freeze.
<b>UniProt Primary AC:</b>	P08575 ( <a href="#">UniProt</a> , <a href="#">ExPASy</a> )
<b>Gene Symbol:</b>	PTPRC
<b>GeneID:</b>	<a href="#">5788</a>
<b>KEGG:</b>	hsa:5788
<b>String:</b>	<a href="#">9606.ENSP00000411355</a>
<b>Buffer:</b>	Stabilizing PBS solution containing 15 mM sodium azide.
<b>Specificity:</b>	The antibody recognizes a sialidase-sensitive epitope of CD45RB, a 180-240 kDa single chain type I membrane glycoprotein, variant of CD45 (CD45RB isoform). CD45RB is expressed on a subset of T lymphocytes, B lymphocytes, monocytes, macrophages, granulocytes and dendritic cells.
<b>Note:</b>	THIS PRODUCT IS FOR RESEARCH USE ONLY. NOT FOR USE IN DIAGNOSTIC, THERAPEUTIC OR COSMETIC PROCEDURES. NOT FOR HUMAN OR ANIMAL CONSUMPTION.

For Reference Only