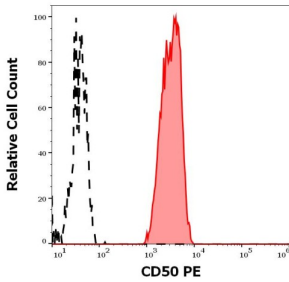
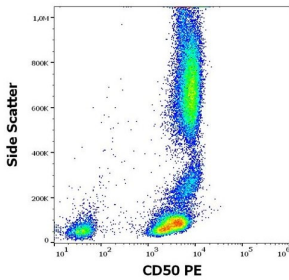


CD50 Antibody (PE)

Catalogue No.: abx139542



Flow cytometry analysis of human peripheral whole blood stained using CD50 antibody conjugated to PE (1 µg/ml).



Flow cytometry analysis of human peripheral whole blood stained using CD50 antibody conjugated to PE (1 µg/ml).

CD50 Antibody is a Mouse Monoclonal against CD50.

Target: CD50

Clonality: Monoclonal

Clone: I856

Reactivity: Human

Tested Applications: FCM

Host: Mouse

Recommended dilutions: FCM: 20 µl/100 µl of whole blood or 10⁶ cells. Optimal dilutions/concentrations should be determined by the end user. The content of a vial (2 ml) is sufficient for 100 tests.

Conjugation: PE

Excitation/Emission: 565/575

Laser Line: 550

Immunogen: Human granulocytes.

Datasheet

Version: 3.0.0
Revision date: 12 Mar 2025



Isotype:	IgG ₁
Storage:	Store in the dark at 2-8°C. Avoid exposure to light. Do not freeze.
UniProt Primary AC:	P32942 (UniProt , ExPASy)
Gene Symbol:	ICAM3
GeneID:	3385
KEGG:	hsa:3385
String:	9606.ENSP00000160262
Buffer:	Stabilizing PBS solution containing 15 mM sodium azide.
Specificity:	The antibody recognizes an epitope in the D2 domain of CD50 (ICAM-3), a 120-130 kDa type I membrane protein (immunoglobulin supergene family) expressed on leukocytes, endothelial cells and Langerhans cells; it is negative on platelets and erythrocytes.
Note:	THIS PRODUCT IS FOR RESEARCH USE ONLY. NOT FOR USE IN DIAGNOSTIC, THERAPEUTIC OR COSMETIC PROCEDURES. NOT FOR HUMAN OR ANIMAL CONSUMPTION.

For Reference Only