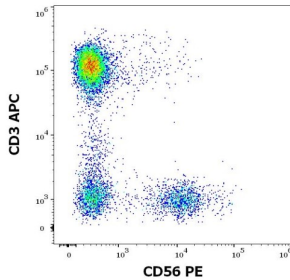
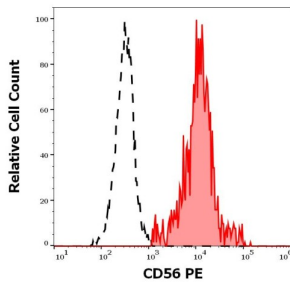


## Neural Cell Adhesion Molecule 1 / CD56 (NCAM1) Antibody (PE)

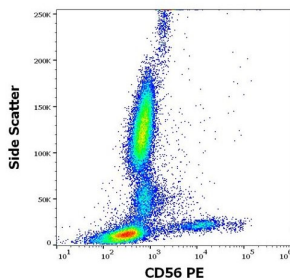
Catalogue No.: abx139772



Flow cytometry analysis of human peripheral whole blood with NCAM1 antibody conjugated to PE.



Flow cytometry analysis of human peripheral whole blood with NCAM1 antibody conjugated to PE.



Flow cytometry analysis of human peripheral whole blood with NCAM1 antibody conjugated to PE.

CD56 Antibody is a Mouse Monoclonal against CD56.

**Target:** Neural Cell Adhesion Molecule 1 / CD56 (NCAM1)

**Clonality:** Monoclonal

**Clone:** U262

**Reactivity:** Human, Monkey

**Tested Applications:** FCM

**Host:** Mouse

**Recommended dilutions:** FCM: 20 µl/100 µl of whole blood or 10<sup>6</sup> cells. Validated in IHC-P. Optimal dilutions/concentrations should be determined by the end user. The content of a vial (2 ml) is sufficient for 100 tests.

# Datasheet

Version: 2.0.0  
Revision date: 14 Jan 2025



<b>Conjugation:</b>	PE
<b>Excitation/Emission:</b>	565/575
<b>Laser Line:</b>	550
<b>Immunogen:</b>	KG-1 Human acute myelogenous leukemia cell line.
<b>Isotype:</b>	IgG <sub>2a</sub>
<b>Storage:</b>	Store in the dark at 2-8°C. Avoid exposure to light. Do not freeze.
<b>UniProt Primary AC:</b>	P13591 ( <a href="#">UniProt</a> , <a href="#">ExpASY</a> )
<b>Gene Symbol:</b>	NCAM1
<b>GeneID:</b>	<a href="#">4684</a>
<b>Buffer:</b>	Stabilizing PBS solution containing 15 mM sodium azide.
<b>Specificity:</b>	The antibody reacts with a 180 kDa isoform of CD56 (NCAM) expressed in leukocytes. It has been suggested that the antibody could react with rhesus monkey lymphocytes. Reactivity with other NCAM isoforms has not been tested.
<b>Note:</b>	This product is for research use only.

For Reference Only