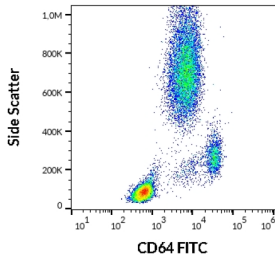
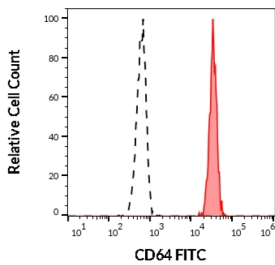


# High Affinity Immunoglobulin Gamma Fc Receptor I / CD64 (FCGR1A) Antibody (FITC)

Catalogue No.: abx139424



Flow cytometry analysis of Human peripheral whole blood, using FITC-conjugated FCGR1A Antibody (4  $\mu$ l reagent / 100  $\mu$ l of peripheral whole blood).



Flow cytometry analysis of Human peripheral whole blood showing separation of monocytes (red) from lymphocytes (black) using FITC-conjugated FCGR1A Antibody (4  $\mu$ l reagent / 100  $\mu$ l of peripheral whole blood).

CD64 Antibody is a Mouse Monoclonal against CD64.

**Target:** High Affinity Immunoglobulin Gamma Fc Receptor I / CD64 (FCGR1A)

**Clonality:** Monoclonal

**Clone:** R245

**Reactivity:** Human, Monkey

**Tested Applications:** FCM

**Host:** Mouse

**Recommended dilutions:** FCM: 4  $\mu$ l/100  $\mu$ l of whole blood or  $10^6$  cells. Optimal dilutions/concentrations should be determined by the end user. The content of a vial (0.4 ml) is sufficient for 100 tests.

**Conjugation:** FITC

**Excitation/Emission:** 499/515

**Laser Line:** 488

# Datasheet

Version: 3.0.0  
Revision date: 12 Mar 2025



<b>Immunogen:</b>	Rheumatoid synovial fluid cells and fibronectin purified Human monocytes.
<b>Isotype:</b>	IgG <sub>1</sub> Kappa
<b>Storage:</b>	Store in the dark at 2-8°C. Avoid exposure to light. Do not freeze.
<b>UniProt Primary AC:</b>	P12314 ( <a href="#">UniProt</a> , <a href="#">ExPASy</a> )
<b>Gene Symbol:</b>	FCGR1A
<b>GeneID:</b>	<a href="#">2209</a>
<b>OMIM:</b>	<a href="#">146760</a>
<b>HGNC:</b>	3613
<b>KEGG:</b>	hsa:2209
<b>Ensembl:</b>	ENSG00000150337
<b>String:</b>	<a href="#">9606.ENSP00000358165</a>
<b>Buffer:</b>	Stabilizing PBS solution containing 15 mM sodium azide.
<b>Specificity:</b>	The mouse monoclonal antibody recognizes alpha subunit of CD64/FcγRI, a 72 kDa single chain type I glycoprotein, that is expressed on monocytes/macrophages, dendritic cells, and activated granulocytes.
<b>Note:</b>	THIS PRODUCT IS FOR RESEARCH USE ONLY. NOT FOR USE IN DIAGNOSTIC, THERAPEUTIC OR COSMETIC PROCEDURES. NOT FOR HUMAN OR ANIMAL CONSUMPTION.

For Reference Only