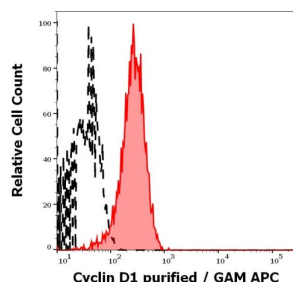


## Cyclin D1 (CCND1) Antibody

Catalogue No.: abx139064



Flow cytometry analysis showing separation of MCF-7 cells stained with CCND1 antibody (8 µg/ml) and Goat anti-Mouse antibody conjugated to APC (red) from MCF-7 cells stained using a Mouse IgG1 isotype control (8 µg/ml) and a Goat anti-Mouse antibody conjugated to APC (black).

Cyclin D1 Antibody is a Mouse Monoclonal against Cyclin D1.

<b>Target:</b>	Cyclin D1 (CCND1)
<b>Clonality:</b>	Monoclonal
<b>Clone:</b>	W373
<b>Reactivity:</b>	Human, Rat
<b>Tested Applications:</b>	ELISA, WB, IHC, IF/ICC, FCM, IP
<b>Host:</b>	Mouse
<b>Recommended dilutions:</b>	WB: 1 µg/ml, IHC-F: 2 µg/ml, IF/ICC: 1 µg/ml, IP: 1 µg/ml, FCM: 4-10 µg/ml. Optimal dilutions/concentrations should be determined by the end user.
<b>Conjugation:</b>	Unconjugated
<b>Immunogen:</b>	Purified cyclin D1 protein.
<b>Isotype:</b>	IgG <sub>1</sub>
<b>Purification:</b>	Purified by Protein A affinity chromatography.
<b>Storage:</b>	Store at 2-8°C. Do not freeze.
<b>UniProt Primary AC:</b>	P24385 ( <a href="#">UniProt</a> , <a href="#">ExPASy</a> )
<b>Gene Symbol:</b>	CCND1
<b>GeneID:</b>	<a href="#">595</a>

# Datasheet

Version: 4.0.0

Revision date: 24 Aug 2025



**KEGG:** hsa:595

**String:** [9606.ENSP00000227507](#)

**Buffer:** Stabilizing PBS, pH 7.4, containing 15 mM sodium azide.

**Specificity:** The antibody recognizes cyclin D1, an ubiquitously expressed 33 kDa protein that migrates as a 36 kDa band under reducing SDS-PAGE conditions.

**Concentration:** 1 mg/ml

**Note:** THIS PRODUCT IS FOR RESEARCH USE ONLY. NOT FOR USE IN DIAGNOSTIC, THERAPEUTIC OR COSMETIC PROCEDURES. NOT FOR HUMAN OR ANIMAL CONSUMPTION.

For Reference Only