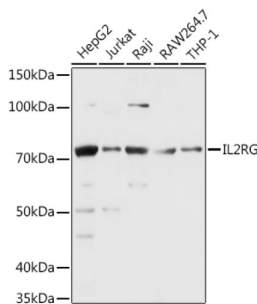


## Interleukin 2 Receptor, Gamma (IL2RG) Antibody

Catalogue No.: abx001511



Western blot analysis of extracts of various cell lines using CD132/IL-2 R gamma Antibody (1/1000 dilution).

IL2RG Antibody is a Rabbit Polyclonal antibody against IL2RG. The protein encoded by this gene is an important signaling component of many interleukin receptors, including those of interleukin -2, -4, -7 and -21, and is thus referred to as the common gamma chain. Mutations in this gene cause X-linked severe combined immunodeficiency (XSCID), as well as X-linked combined immunodeficiency (XCID), a less severe immunodeficiency disorder. [provided by RefSeq, Mar 2010].

**Target:** Interleukin 2 Receptor, Gamma (IL2RG)

**Clonality:** Polyclonal

**Reactivity:** Human, Mouse

**Tested Applications:** WB

**Host:** Rabbit

**Recommended dilutions:** WB: 1/500 - 1/2000. Optimal dilutions/concentrations should be determined by the end user.

**Conjugation:** Unconjugated

**Immunogen:** Recombinant fusion protein corresponding to human CD132/IL-2 R gamma

**Isotype:** IgG

**Form:** Liquid

**Purification:** Purified by affinity chromatography.

**Storage:** Aliquot and store at -20°C. Avoid repeated freeze/thaw cycles.

**UniProt Primary AC:** P31785 ([UniProt](#), [ExPASy](#))

**Gene Symbol:** IL2RG

# Datasheet

Version: 3.0.0  
Revision date: 06 Feb 2025



**GeneID:** [3561](#)

**NCBI Accession:** NP\_000197.1

**KEGG:** hsa:3561

**String:** [9606.ENSP00000363318](#)

**Molecular Weight:** Calculated MW: 20 kDa/42 kDa  
Observed MW: 70 kDa

**Buffer:** PBS, pH 7.3, containing 0.01% thiomersal, 50% glycerol.

**Concentration:** 1 mg/ml

**Note:** This product is for research use only.

For Reference Only