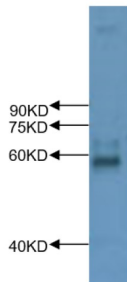


OsMPK5 Antibody

Catalogue No.: abx018523



WB analysis of OsMPK5 expression in rice (CV. 9311) shoot at the seedling stage, using OsMPK5 antibody (1/1000 dilution).

OsMPK5 Antibody is a Rabbit Polyclonal antibody against OsMPK5.

Target:	OsMPK5
Clonality:	Polyclonal
Reactivity:	Plant
Tested Applications:	WB
Host:	Rabbit
Recommended dilutions:	Optimal dilutions/concentrations should be determined by the end user.
Conjugation:	Unconjugated
Immunogen:	Synthetic peptide corresponding to the OsMPK5 protein.
Form:	Liquid
Purification:	Unpurified serum.
Storage:	Aliquot and store at -20°C. Avoid repeated freeze/thaw cycles.
GabiPD GreenCard:	LOC_Os03g17700.1
Buffer:	Serum.
Note:	THIS PRODUCT IS FOR RESEARCH USE ONLY. NOT FOR USE IN DIAGNOSTIC, THERAPEUTIC OR COSMETIC PROCEDURES. NOT FOR HUMAN OR ANIMAL CONSUMPTION.