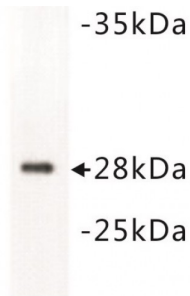


## 14-3-3 Beta/alpha (YWHAB) Antibody

Catalogue No.: abx019001



14-3-3 beta/alpha Antibody is a Rabbit Polyclonal antibody against Human, Mouse and Rat.

<b>Target:</b>	14-3-3 Beta/alpha (YWHAB)
<b>Clonality:</b>	Polyclonal
<b>Reactivity:</b>	Human, Mouse, Rat
<b>Tested Applications:</b>	WB
<b>Host:</b>	Rabbit
<b>Recommended dilutions:</b>	Optimal dilutions/concentrations should be determined by the end user.
<b>Conjugation:</b>	Unconjugated
<b>Immunogen:</b>	A synthetic peptide (conjugated with KLH) corresponding to the C-terminal residues of mouse 14-3-3 b/a.
<b>Isotype:</b>	IgG
<b>Purification:</b>	Immunogen affinity purified.
<b>Storage:</b>	Aliquot and store at -20 °C. Avoid repeated freeze/thaw cycles.
<b>UniProt Primary AC:</b>	Q9CQV8 ( <a href="#">UniProt</a> , <a href="#">ExPASy</a> )
<b>GeneID:</b>	<a href="#">54401</a>
<b>String:</b>	<a href="#">10090.ENSMUSP00000018470</a>
<b>Buffer:</b>	TBS, pH 7.4, 0.5% BSA, 40% glycerol and 0.05% sodium azide.

# Datasheet

Version: 1.0.0

Revision date: 13 Dec 2023



**Note:** This product is for research use only.

For Reference Only