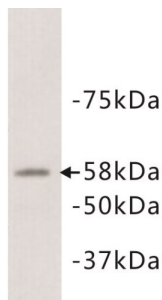


## Alkaline Phosphatase, Placental (ALPP) Antibody

Catalogue No.: abx019007



Alkaline phosphatase Antibody is a Rabbit Polyclonal antibody against Human, Mouse and Rat.

<b>Target:</b>	Alkaline Phosphatase, Placental (ALPP)
<b>Clonality:</b>	Polyclonal
<b>Reactivity:</b>	Human, Mouse, Rat
<b>Tested Applications:</b>	WB
<b>Host:</b>	Rabbit
<b>Recommended dilutions:</b>	Optimal dilutions/concentrations should be determined by the end user.
<b>Conjugation:</b>	Unconjugated
<b>Immunogen:</b>	A synthetic peptide (conjugated with KLH) corresponding to the region of human ALPP.
<b>Isotype:</b>	IgG
<b>Purification:</b>	Immunogen affinity purified.
<b>Storage:</b>	Aliquot and store at -20 °C. Avoid repeated freeze/thaw cycles.
<b>UniProt Primary AC:</b>	P05186 ( <a href="#">UniProt</a> , <a href="#">ExPASy</a> )
<b>GeneID:</b>	<a href="#">249</a>
<b>OMIM:</b>	<a href="#">171760</a>
<b>KEGG:</b>	hsa:249

# Datasheet

Version: 1.0.0

Revision date: 25 Nov 2024



**String:** [9606.ENSF00000363973](#)

**Buffer:** TBS, pH 7.4, 0.5% BSA, 40% glycerol and 0.05% sodium azide.

**Note:** This product is for research use only.

For Reference Only