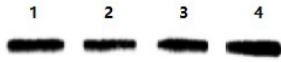


Datasheet

Version: 4.0.0
Revision date: 10 Dec 2024

Beta Actin (ACTB) Antibody

Catalogue No.: abx019024



Lane 1 Mouse liver tissue lysate
Lane 2 Rat heart tissue lysate
Lane 3 Rat brain tissue lysate
Lane 4 Human hela cell lysate

beta Actin Antibody is a Mouse Monoclonal antibody against Human, Mouse, Rat, Cow, Sheep, Pig, Rabbit, Cat, Dog, Guinea Pig, Chicken, Fish and Leech.

Target:	Beta Actin (ACTB)
Clonality:	Monoclonal
Reactivity:	Human, Mouse, Rat, Cow, Sheep, Pig, Rabbit, Cat, Dog, Guinea pig, Chicken, Fish, Leech
Tested Applications:	ELISA, WB, IHC, IF/ICC, IP
Host:	Mouse
Recommended dilutions:	ELISA: 1/5000 - 1/50000, WB: 1/1000 - 1/10000, IHC: 1/50 - 1/500, IF/ICC: 1/50 - 1/500, IP: 1-2 µg per 100-500 µg of total protein or 1 ml of cell lysate. Optimal dilutions/concentrations should be determined by the end user.
Conjugation:	Unconjugated
Immunogen:	Gizzard Actin of chicken origin.
Epitope Region:	N-terminal region of beta actin.
Isotype:	IgG ₁
Form:	Liquid
Storage:	Aliquot and store at -20°C. Avoid repeated freeze/thaw cycles.
Note:	This product is for research use only.