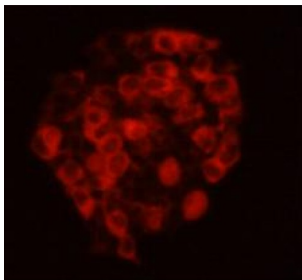
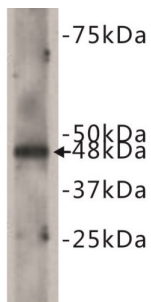


# Datasheet

Version: 1.0.0  
Revision date: 03 Dec 2024

## Cadherin EGF LAG Seven Pass G-Type Receptor 2 (CELSR2) Antibody

Catalogue No.: abx019031



CELSR2 Antibody is a Rabbit Polyclonal antibody against Human.

<b>Target:</b>	Cadherin EGF LAG Seven Pass G-Type Receptor 2 (CELSR2)
<b>Clonality:</b>	Polyclonal
<b>Reactivity:</b>	Human
<b>Tested Applications:</b>	WB, IF/ICC
<b>Host:</b>	Rabbit
<b>Recommended dilutions:</b>	Optimal dilutions/concentrations should be determined by the end user.
<b>Conjugation:</b>	Unconjugated
<b>Immunogen:</b>	A synthetic peptide (conjugated with KLH) corresponding to the region of human CELSR2.
<b>Isotype:</b>	IgG
<b>Purification:</b>	Immunogen affinity purified.
<b>Storage:</b>	Aliquot and store at -20 °C. Avoid repeated freeze/thaw cycles.

# Datasheet

Version: 1.0.0  
Revision date: 03 Dec 2024



**UniProt Primary AC:** Q9HCU4 ([UniProt](#), [ExPASy](#))

**GeneID:** [1952](#)

**OMIM:** [604265](#)

**String:** [9606.ENSP00000271332](#)

**Buffer:** TBS, pH 7.4, 0.5% BSA, 40% glycerol and 0.05% sodium azide.

**Note:** This product is for research use only.

For Reference Only