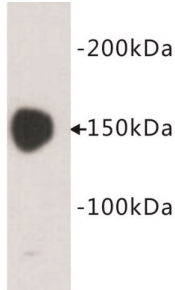


## Carcinoembryonic Antigen-Related Cell Adhesion Molecule 5 (CEACAM5) Antibody

Catalogue No.: abx019034



CEA Antibody is a Rabbit Polyclonal antibody against Human.

<b>Target:</b>	Carcinoembryonic Antigen-Related Cell Adhesion Molecule 5 (CEACAM5)
<b>Clonality:</b>	Polyclonal
<b>Reactivity:</b>	Human
<b>Tested Applications:</b>	WB, IF/ICC
<b>Host:</b>	Rabbit
<b>Recommended dilutions:</b>	Optimal dilutions/concentrations should be determined by the end user.
<b>Conjugation:</b>	Unconjugated
<b>Immunogen:</b>	A synthetic peptide (conjugated with KLH) corresponding to the region of human CEA.
<b>Isotype:</b>	IgG
<b>Purification:</b>	Immunogen affinity purified.
<b>Storage:</b>	Aliquot and store at -20 °C. Avoid repeated freeze/thaw cycles.
<b>UniProt Primary AC:</b>	P06731 ( <a href="#">UniProt</a> , <a href="#">ExpASY</a> )
<b>GeneID:</b>	<a href="#">1048</a>
<b>OMIM:</b>	<a href="#">114890</a>

# Datasheet

Version: 1.0.0  
Revision date: 04 Dec 2024



**KEGG:** hsa:1048

**String:** [9606.ENSF00000221992](#)

**Buffer:** TBS, pH 7.4, 0.5% BSA, 40% glycerol and 0.05% sodium azide.

**Note:** This product is for research use only.

For Reference Only