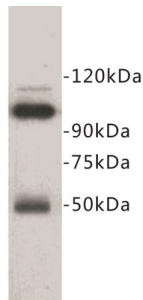


Melanoma Cell Adhesion Molecule (MCAM) Antibody

Catalogue No.: abx019043



CD146 Antibody is a Rabbit Polyclonal antibody against Human, Mouse and Rat.

Target:	Melanoma Cell Adhesion Molecule (MCAM)
Clonality:	Polyclonal
Reactivity:	Human, Mouse, Rat
Tested Applications:	WB, IF/ICC, FCM
Host:	Rabbit
Recommended dilutions:	Optimal dilutions/concentrations should be determined by the end user.
Conjugation:	Unconjugated
Immunogen:	A synthetic peptide (conjugated with KLH) corresponding to the extracellular region of CD146.
Isotype:	IgG
Purification:	Immunogen affinity purified.
Storage:	Aliquot and store at -20 °C. Avoid repeated freeze/thaw cycles.
UniProt Primary AC:	P43121 (UniProt , ExpASY)
GeneID:	4162
OMIM:	155735
KEGG:	hsa:4162

Datasheet

Version: 2.0.0

Revision date: 06 Feb 2025



String: [9606.ENSF00000264036](#)

Buffer: TBS, pH 7.4, 0.5% BSA, 40% glycerol and 0.05% sodium azide.

Note: This product is for research use only.

For Reference Only