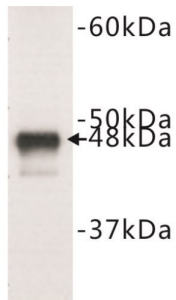


Keratin 18 (KRT18) Antibody

Catalogue No.: abx019069



CK18 Antibody is a Rabbit Polyclonal antibody against Human, Mouse and Rat.

Target:	Keratin 18 (KRT18)
Clonality:	Polyclonal
Reactivity:	Human, Mouse, Rat
Tested Applications:	WB
Host:	Rabbit
Recommended dilutions:	Optimal dilutions/concentrations should be determined by the end user.
Conjugation:	Unconjugated
Immunogen:	A synthetic peptide (conjugated with KLH) corresponding to the C-terminal of mouse Cytokeratin 18.
Isotype:	IgG
Purification:	Immunogen affinity purified.
Storage:	Aliquot and store at -20 °C. Avoid repeated freeze/thaw cycles.
UniProt Primary AC:	P05784 (UniProt , ExPASy)
GeneID:	16668
KEGG:	mmu:16668
String:	10090.ENSMUSP00000023803

Datasheet

Version: 1.0.0

Revision date: 28 Dec 2024



Buffer: TBS, pH 7.4, 0.5% BSA, 40% glycerol and 0.05% sodium azide.

Note: This product is for research use only.

For Reference Only