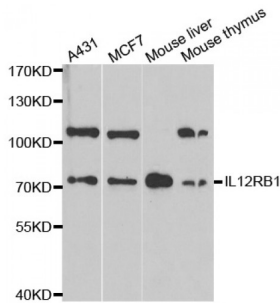
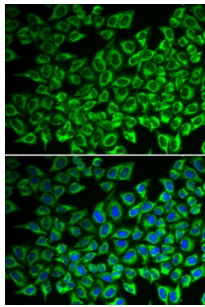


Interleukin 12 Receptor Beta 1 (IL12RB1) Antibody

Catalogue No.: abx001549



Western blot analysis of extracts of various cell lines, using IL12RB1 antibody (abx001549) at 1/1000 dilution.



Immunofluorescence analysis of A549 cells using IL12RB1 antibody (abx001549). Blue: DAPI for nuclear staining.

IL12RB1 Antibody is a Rabbit Polyclonal antibody against IL12RB1. The protein encoded by this gene is a type I transmembrane protein that belongs to the hemopoietin receptor superfamily. This protein binds to interleukine 12 (IL12) with a low affinity, and is thought to be a part of IL12 receptor complex. This protein forms a disulfide-linked oligomer, which is required for its IL12 binding activity. The coexpression of this and IL12RB2 proteins was shown to lead to the formation of high-affinity IL12 binding sites and reconstitution of IL12 dependent signaling. Mutations in this gene impair the development of interleukin-17-producing T lymphocytes and result in increased susceptibility to mycobacterial and Salmonella infections. Alternative splicing results in multiple transcript variants.

Target: Interleukin 12 Receptor Beta 1 (IL12RB1)

Clonality: Polyclonal

Reactivity: Human, Mouse, Rat

Tested Applications: WB

Host: Rabbit

Recommended dilutions: WB: 1/500 - 1/2000. Optimal dilutions/concentrations should be determined by the end user.

Conjugation: Unconjugated

Immunogen: Recombinant fusion protein containing a sequence corresponding to amino acids 25-305 of human IL12RB1.

Datasheet

Version: 2.0.0
Revision date: 10 Mar 2024



Isotype:	IgG
Form:	Liquid
Purification:	Purified by affinity chromatography.
Storage:	Aliquot and store at -20°C. Avoid repeated freeze/thaw cycles.
UniProt Primary AC:	P42701 (UniProt , ExPASy)
Gene Symbol:	IL12RB1
GeneID:	3594
NCBI Accession:	NP_714912.1
KEGG:	hsa:3594
String:	9606.ENSP00000470788
Molecular Weight:	Calculated MW: 73 kDa Observed MW: 102 kDa
Buffer:	PBS, pH 7.3, containing 0.02% sodium azide, 50% glycerol.
Concentration:	> 0.2 mg/ml
Note:	This product is for research use only.

For Reference Only