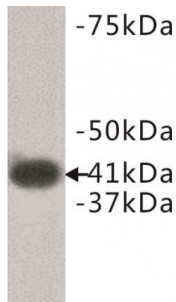


Datasheet

Version: 1.0.0
Revision date: 30 Jul 2023

LPA Receptor 1 Antibody

Catalogue No.: abx019130



LPA Receptor 1 Antibody is a Rabbit Polyclonal antibody against Mouse.

Target:	LPA Receptor 1
Clonality:	Polyclonal
Reactivity:	Mouse
Tested Applications:	WB
Host:	Rabbit
Recommended dilutions:	Optimal dilutions/concentrations should be determined by the end user.
Conjugation:	Unconjugated
Immunogen:	A synthetic peptide (conjugated with KLH) corresponding to the region of mouse LPAR1.
Isotype:	IgG
Purification:	Immunogen affinity purified.
Storage:	Aliquot and store at -20 °C. Avoid repeated freeze/thaw cycles.
UniProt Primary AC:	P61794 (UniProt , ExpASY)
GeneID:	116744
KEGG:	rno:116744
String:	10116.ENSRNOP00000043652

Datasheet

Version: 1.0.0

Revision date: 30 Jul 2023



Buffer: TBS, pH 7.4, 0.5% BSA, 40% glycerol and 0.05% sodium azide.

Note: This product is for research use only.

For Reference Only