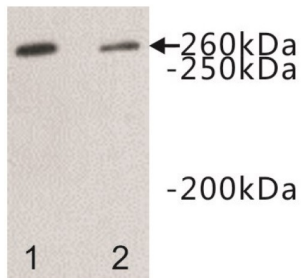


## Protein Dopey-2 (DOPEY2) Antibody

Catalogue No.: abx019158



Protein dopey-2 Antibody is a Rabbit Polyclonal antibody against Human and Mouse.

<b>Target:</b>	Protein Dopey-2 (DOPEY2)
<b>Clonality:</b>	Polyclonal
<b>Reactivity:</b>	Human, Mouse
<b>Tested Applications:</b>	WB, IHC, IF/ICC, FCM
<b>Host:</b>	Rabbit
<b>Recommended dilutions:</b>	WB: 1/200 - 1/500, IHC-P: 1/20 - 1/100, IF/ICC: 1/20 - 1/250, FCM: 1/20 - 1/50. Optimal dilutions/concentrations should be determined by the end user.
<b>Conjugation:</b>	Unconjugated
<b>Immunogen:</b>	A synthetic peptide (conjugated with KLH) corresponding to the region of Protein dopey-2.
<b>Isotype:</b>	IgG
<b>Form:</b>	Liquid
<b>Purification:</b>	Immunogen affinity purified.
<b>Storage:</b>	Aliquot and store at -20 °C. Avoid repeated freeze/thaw cycles.
<b>UniProt Primary AC:</b>	Q9Y3R5 ( <a href="#">UniProt</a> , <a href="#">ExPASy</a> )
<b>GeneID:</b>	<a href="#">9980</a>
<b>OMIM:</b>	<a href="#">604803</a>

# Datasheet

Version: 9.0.0

Revision date: 04 Dec 2024



**String:** [9606.ENSF00000382104](#)

**Buffer:** PBS, pH 7.4, 0.2% BSA, 40% glycerol and 0.05% sodium azide.

**Concentration:** 2 mg/ml

**Note:** This product is for research use only.

For Reference Only