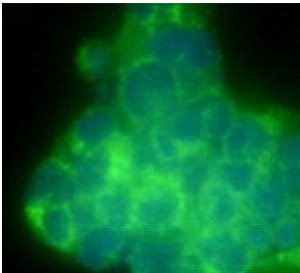
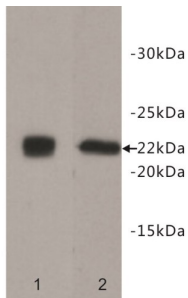


Thy-1 Membrane Glycoprotein (THY1) Antibody

Catalogue No.: abx019176



THY1 Antibody is a Rabbit Polyclonal antibody against Human and Mouse.

Target:	Thy-1 Membrane Glycoprotein (THY1)
Clonality:	Polyclonal
Reactivity:	Human, Mouse
Tested Applications:	WB, IF/ICC
Host:	Rabbit
Recommended dilutions:	Optimal dilutions/concentrations should be determined by the end user.
Conjugation:	Unconjugated
Immunogen:	A synthetic peptide (conjugated to KLH) corresponding to the region of THY-1.
Isotype:	IgG
Purification:	Immunogen affinity purified.
Storage:	Aliquot and store at -20 °C. Avoid repeated freeze/thaw cycles.

Datasheet

Version: 2.0.0
Revision date: 12 Mar 2025



UniProt Primary AC: P04216 ([UniProt](#), [ExPASy](#))

GeneID: [7070](#)

OMIM: [188230](#)

KEGG: hsa:7070

String: [9606.ENSP00000284240](#)

Buffer: TBS, pH 7.4, 0.5% BSA, 40% glycerol and 0.05% sodium azide.

Note: THIS PRODUCT IS FOR RESEARCH USE ONLY. NOT FOR USE IN DIAGNOSTIC, THERAPEUTIC OR COSMETIC PROCEDURES. NOT FOR HUMAN OR ANIMAL CONSUMPTION.

For Reference Only