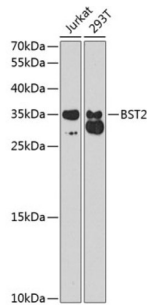


Bone Marrow Stromal Antigen 2 (BST2) Antibody

Catalogue No.: abx001564



Western blot analysis of extracts of various cell lines using BST2 Antibody (1/1000 dilution).

BST2 Antibody is a Rabbit Polyclonal antibody against BST2. Bone marrow stromal cells are involved in the growth and development of B-cells. The specific function of the protein encoded by the bone marrow stromal cell antigen 2 is undetermined; however, this protein may play a role in pre-B-cell growth and in rheumatoid arthritis.

Target:	Bone Marrow Stromal Antigen 2 (BST2)
Clonality:	Polyclonal
Reactivity:	Human
Tested Applications:	WB
Host:	Rabbit
Recommended dilutions:	WB: 1/500 - 1/2000. Optimal dilutions/concentrations should be determined by the end user.
Conjugation:	Unconjugated
Immunogen:	Recombinant fusion protein corresponding to human BST2
Isotype:	IgG
Form:	Liquid
Purification:	Purified by affinity chromatography.
Storage:	Aliquot and store at -20°C. Avoid repeated freeze/thaw cycles.
UniProt Primary AC:	Q10589 (UniProt , ExPASy)
Gene Symbol:	BST2

Datasheet

Version: 3.0.0
Revision date: 19 Apr 2025



GeneID: [684](#)

NCBI Accession: NP_004326.1

KEGG: hsa:684

String: [9606.ENSP00000252593](#)

Molecular Weight: Calculated MW: 18 kDa/19 kDa
Observed MW: 36 kDa

Buffer: PBS, pH 7.3, containing 0.02% sodium azide, 50% glycerol.

Concentration: 1 mg/ml

Note: THIS PRODUCT IS FOR RESEARCH USE ONLY. NOT FOR USE IN DIAGNOSTIC, THERAPEUTIC OR COSMETIC PROCEDURES. NOT FOR HUMAN OR ANIMAL CONSUMPTION.

For Reference Only