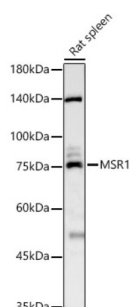
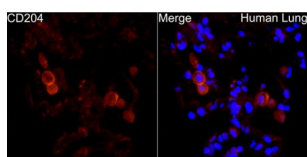


Macrophage Scavenger Receptor 1 (MSR1) Antibody

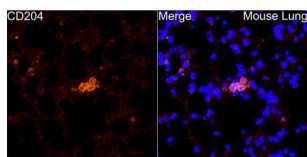
Catalogue No.: abx001570



WB analysis of extracts of various cell lines, using MSR1 antibody (abx001570) at 1/1000 dilution.



IF analysis of Human lung cells, using MSR1 antibody (abx001570) at 1/1200 dilution (40x lens).



IF analysis of Mouse lung cells, using MSR1 antibody (abx001570) at 1/1200 dilution (40x lens).

MSR1 Antibody is a Rabbit Polyclonal antibody against MSR1. This gene encodes the class A macrophage scavenger receptors, which include three different types (1, 2, 3) generated by alternative splicing of this gene. These receptors or isoforms are macrophage-specific trimeric integral membrane glycoproteins and have been implicated in many macrophage-associated physiological and pathological processes including atherosclerosis, Alzheimer's disease, and host defense. The isoforms type 1 and type 2 are functional receptors and are able to mediate the endocytosis of modified low density lipoproteins (LDLs). The isoform type 3 does not internalize modified LDL (acetyl-LDL) despite having the domain shown to mediate this function in the types 1 and 2 isoforms. It has an altered intracellular processing and is trapped within the endoplasmic reticulum, making it unable to perform endocytosis. The isoform type 3 can inhibit the function of isoforms type 1 and type 2 when co-expressed, indicating a dominant negative effect and suggesting a mechanism for regulation of scavenger receptor activity in macrophages. [provided by RefSeq, Jul 2008].

Target: Macrophage Scavenger Receptor 1 (MSR1)

Clonality: Polyclonal

Reactivity: Human, Mouse, Rat

Datasheet

Version: 3.0.0
Revision date: 27 Jul 2024



Tested Applications:	WB, IF/ICC
Host:	Rabbit
Recommended dilutions:	WB: 1/500 - 1/1000, IF/ICC: 1/50 - 1/200. Optimal dilutions/concentrations should be determined by the end user.
Conjugation:	Unconjugated
Immunogen:	Recombinant fusion protein containing a sequence corresponding to amino acids 90-274 of human MSR1.
Isotype:	IgG
Form:	Liquid
Purification:	Purified by affinity chromatography.
Storage:	Aliquot and store at -20°C. Avoid repeated freeze/thaw cycles.
UniProt Primary AC:	P21757 (UniProt , ExPASy)
Gene Symbol:	MSR1
GeneID:	4481
NCBI Accession:	NP_619729.1
KEGG:	hsa:4481
String:	9606.ENSP00000262101
Molecular Weight:	Calculated MW: 50 kDa Observed MW: 70-90 kDa
Buffer:	PBS, pH 7.3, containing 0.01% thimerosal, 50% glycerol.
Concentration:	0.44 mg/ml
Note:	This product is for research use only.