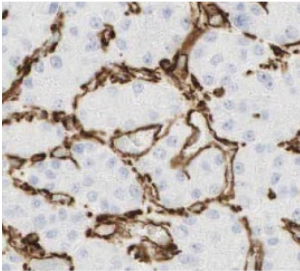


## Bile Salt Export Pump (ABCB11) Antibody

Catalogue No.: abx147866



IHC-P analysis of human liver cancer tissue, using BSEP antibody (1/100 dilution).

Bile Salt Export Pump (ABCB11) Antibody is a Rabbit Polyclonal antibody for the detection of BSEP.

<b>Target:</b>	Bile Salt Export Pump (ABCB11)
<b>Clonality:</b>	Polyclonal
<b>Reactivity:</b>	Human, Mouse
<b>Tested Applications:</b>	ELISA, IHC
<b>Host:</b>	Rabbit
<b>Recommended dilutions:</b>	IHC: 1/50 - 1/500. Optimal dilutions/concentrations should be determined by the end user.
<b>Conjugation:</b>	Unconjugated
<b>Immunogen:</b>	ATP-binding cassette, sub-family B (MDR/TAP), member 11
<b>Isotype:</b>	IgG
<b>Form:</b>	Liquid
<b>Purity:</b>	≥ 95% (SDS-PAGE)
<b>Purification:</b>	Purified by immunogen affinity chromatography.
<b>Storage:</b>	Aliquot and store at -20°C. Avoid repeated freeze/thaw cycles.
<b>Validity:</b>	12 months.
<b>UniProt Primary AC:</b>	O95342 ( <a href="#">UniProt</a> , <a href="#">ExPASy</a> )

# Datasheet

Version: 2.0.0  
Revision date: 24 Sep 2024



**Gene Symbol:** ABCB11

**GeneID:** [8647](#)

**OMIM:** [601847](#)

**HGNC:** 42

**KEGG:** hsa:8647

**Ensembl:** ENSG00000073734

**String:** [9606.ENSP00000263817](#)

**Buffer:** PBS, pH 7.3, with 0.02% sodium azide and 50% glycerol.

**Concentration:** 2 mg/ml

**Note:** This product is for research use only.

For Reference Only