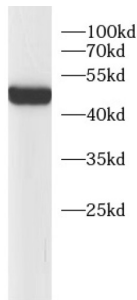
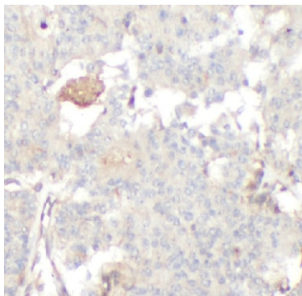


Actin, Alpha Skeletal Muscle (ACTA1) Antibody

Catalogue No.: abx147942



WB analysis of HeLa cells, using ACTA1 antibody (1/1000 dilution).



IHC-P analysis of human breast cancer tissue, using ACTA1 antibody (1/50 dilution).

Actin, Alpha Skeletal Muscle (ACTA1) Antibody is a Rabbit Polyclonal antibody for the detection of ACTA1.

Actins are highly conserved proteins that are involved in various types of cell motility and are ubiquitously expressed in all eukaryotic cells. The ACTA1 gene encodes skeletal muscle alpha-actin, the principal actin isoform in adult skeletal muscle, which interacts with a variety of proteins to produce the force for muscle contraction. There is only the N-terminal 8 amino acids difference among the actin family members. This antibody is specific to the ACTA1. It does not cross-react with other actin isoforms.

Target: Actin, Alpha Skeletal Muscle (ACTA1)

Clonality: Polyclonal

Reactivity: Human

Tested Applications: ELISA, WB, IHC, IF/ICC

Host: Rabbit

Recommended dilutions: WB: 1/500 - 1/2000, IHC: 1/20 - 1/200, IF/ICC: 1/20 - 1/200. Optimal dilutions/concentrations should be determined by the end user.

Conjugation: Unconjugated

Immunogen: actin, alpha 1, skeletal muscle

Datasheet

Version: 2.0.0
Revision date: 03 Dec 2024



Isotype:	IgG
Form:	Liquid
Purity:	≥ 95% (SDS-PAGE)
Purification:	Purified by immunogen affinity chromatography.
Storage:	Aliquot and store at -20°C. Avoid repeated freeze/thaw cycles.
Validity:	12 months.
UniProt Primary AC:	P68133 (UniProt , ExPASy)
Gene Symbol:	ACTA1
GeneID:	58
OMIM:	102610
HGNC:	129
KEGG:	hsa:58
Ensembl:	ENSG00000143632
String:	9606.ENSP00000355645
Molecular Weight:	Observed MW: 42 kDa
Buffer:	PBS, pH 7.3, with 0.02% sodium azide and 50% glycerol.
Concentration:	2 mg/ml
Note:	This product is for research use only.