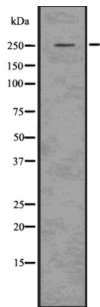


Aggrecan Core Protein (ACAN) Antibody

Catalogue No.: abx147904



Western blot analysis of Aggrecan? using 293 whole cell lysates.

Aggrecan Antibody is a Rabbit Polyclonal against Aggrecan.

Target: Aggrecan Core Protein (ACAN)**Clonality:** Polyclonal**Reactivity:** Human, Mouse, Rat**Tested Applications:** WB**Host:** Rabbit**Recommended dilutions:** WB: 1/1000 - 1/3000. Optimal dilutions/concentrations should be determined by the end user.**Conjugation:** Unconjugated**Immunogen:** Synthesised peptide derived from human Aggrecan**Form:** Liquid**Purification:** Purified by affinity chromatography using epitope-specific peptide.**Storage:** Aliquot and store at -20°C. Avoid repeated freeze/thaw cycles.**UniProt Primary AC:** P16112 ([UniProt](#), [ExpASY](#))**Gene Symbol:** ACAN**GeneID:** [176](#)**KEGG:** hsa:176

Datasheet

Version: 4.0.0
Revision date: 09 Apr 2025



Ensembl: ENSG00000157766

String: [9606.ENSP00000387356](#)

Molecular Weight: 250 kDa

Buffer: PBS, pH 7.4, 150 mM NaCl, 0.02% sodium azide and 50% glycerol.

Specificity: Aggrecan Antibody detects endogenous levels of total Aggrecan

Concentration: 1 mg/ml

Note: THIS PRODUCT IS FOR RESEARCH USE ONLY. NOT FOR USE IN DIAGNOSTIC, THERAPEUTIC OR COSMETIC PROCEDURES. NOT FOR HUMAN OR ANIMAL CONSUMPTION.

For Reference Only