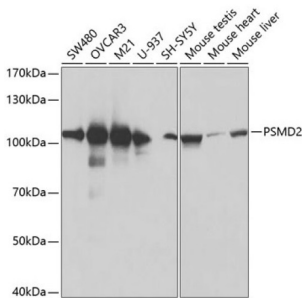
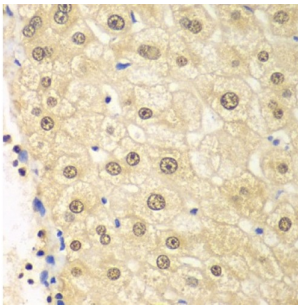


Proteasome 26S Subunit, Non ATPase 2 (PSMD2) Antibody

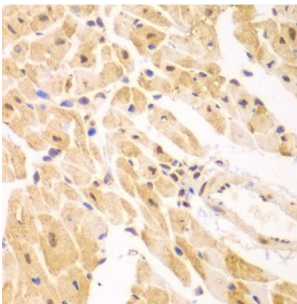
Catalogue No.: abx001625



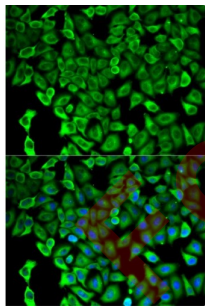
Western blot analysis of extracts of various cell lines, using PSMD2 antibody (abx001625) at 1:600 dilution.



Immunohistochemistry of paraffin-embedded human liver injury using PSMD2 antibody (abx001625) at dilution of 1/100 (40x lens).



Immunohistochemistry of paraffin-embedded mouse heart using PSMD2 antibody (abx001625) at dilution of 1/100 (40x lens).



Immunofluorescence analysis of HeLa cells using PSMD2 antibody (abx001625). Blue: DAPI for nuclear staining.

PSMD2 Antibody is a Rabbit Polyclonal antibody against PSMD2. The 26S proteasome is a multicatalytic proteinase complex with a highly ordered structure composed of 2 complexes, a 20S core and a 19S regulator. The 20S core is composed of 4 rings of 28 non-identical subunits; 2 rings are composed of 7 alpha subunits and 2 rings are composed of 7 beta subunits. The 19S regulator is composed of a base, which contains 6 ATPase subunits and 2 non-ATPase subunits, and a lid, which contains up to 10 non-ATPase subunits. Proteasomes are distributed throughout eukaryotic cells at a high concentration and cleave peptides in an ATP/ubiquitin-dependent process in a non-lysosomal pathway. An essential function of a modified proteasome, the immunoproteasome, is the processing of class I MHC peptides. This gene encodes one of the non-ATPase subunits of the 19S regulator lid. In addition to participation in proteasome function, this subunit may also participate in the TNF signalling pathway since it interacts with the tumor necrosis factor type 1 receptor. A pseudogene has been identified on chromosome 1. Alternative splicing results in multiple transcript variants of this gene.

Datasheet

Version: 3.0.0
Revision date: 23 Dec 2024



Target:	Proteasome 26S Subunit, Non ATPase 2 (PSMD2)
Clonality:	Polyclonal
Reactivity:	Human, Mouse
Tested Applications:	WB, IF/ICC
Host:	Rabbit
Recommended dilutions:	WB: 1/500 - 1/2000, IF/ICC: 1/50 - 1/200. Optimal dilutions/concentrations should be determined by the end user.
Conjugation:	Unconjugated
Immunogen:	Recombinant fusion protein containing a sequence corresponding to amino acids 1-260 of human PSMD2.
Isotype:	IgG
Form:	Liquid
Purification:	Purified by affinity chromatography.
Storage:	Aliquot and store at -20°C. Avoid repeated freeze/thaw cycles.
UniProt Primary AC:	Q13200 (UniProt , ExPASy)
Gene Symbol:	PSMD2
GeneID:	5708
NCBI Accession:	NP_002799.3
KEGG:	hsa:5708
String:	9606.ENSP00000310129
Molecular Weight:	Calculated MW: 100 kDa Observed MW: 108 kDa
Buffer:	PBS, pH 7.3, containing 0.02% sodium azide, 50% glycerol.
Concentration:	> 0.2 mg/ml
Note:	This product is for research use only.