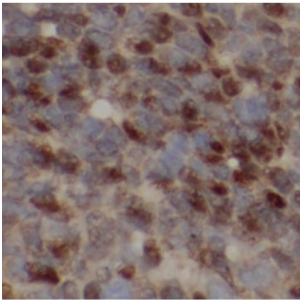


Proline-, Glutamic Acid- And Leucine-Rich Protein 1 (PELP1) Antibody

Catalogue No.: abx216900



IHC-P analysis of human liver cancer tissue, using PELP1 antibody (1/100 dilution).

Proline-, Glutamic Acid- And Leucine-Rich Protein 1 (PELP1) Antibody is a Rabbit Polyclonal antibody for the detection of PELP1.

Target:	Proline-, Glutamic Acid- And Leucine-Rich Protein 1 (PELP1)
Clonality:	Polyclonal
Reactivity:	Human, Mouse, Rat
Tested Applications:	IHC
Host:	Rabbit
Recommended dilutions:	IHC: 1/50 - 1/200. Optimal dilutions/concentrations should be determined by the end user.
Conjugation:	Unconjugated
Immunogen:	Proline-, glutamic acid- and leucine-rich protein 1
Isotype:	IgG
Form:	Liquid
Purity:	≥ 95% (SDS-PAGE)
Purification:	Purified by immunogen affinity chromatography.
Storage:	Aliquot and store at -20°C. Avoid repeated freeze/thaw cycles.
Validity:	12 months.

Datasheet

Version: 1.0.0
Revision date: 11 Jan 2025



UniProt Primary AC:	Q8IZL8 (UniProt , ExPASy)
Gene Symbol:	PELP1
GeneID:	27043
OMIM:	609455
HGNC:	30134
KEGG:	hsa:27043
String:	9606.ENSP00000301396
Molecular Weight:	Observed MW: 119 kDa
Buffer:	PBS, pH 7.3, with 0.02% sodium azide and 50% glycerol.
Concentration:	2 mg/ml
Note:	This product is for research use only.

For Reference Only