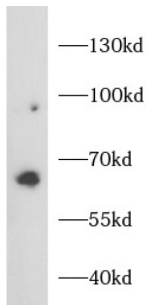


SATB Homeobox 2 (SATB2) Antibody

Catalogue No.: abx218442



WB analysis of MCF7 cells, using SATB2 antibody (1/1000 dilution).

SATB Homeobox 2 (SATB2) Antibody is a Rabbit Polyclonal antibody for the detection of SATB2.

Binds to DNA, at nuclear matrix-or scaffold-associated regions. Thought to recognize the sugar-phosphate structure of double-stranded DNA. Transcription factor controlling nuclear gene expression, by binding to matrix attachment regions (MARs) of DNA and inducing a local chromatin-loop remodeling. Acts as a docking site for several chromatin remodeling enzymes and also by recruiting corepressors (HDACs) or coactivators (HATs) directly to promoters and enhancers. Required for the initiation of the upper-layer neurons (UL1) specific genetic program and for the inactivation of deep-layer neurons (DL) and UL2 specific genes, probably by modulating BCL11B expression. Repressor of Ctip2 and regulatory determinant of corticocortical connections in the developing cerebral cortex. May play an important role in palate formation. Acts as a molecular node in a transcriptional network regulating skeletal development and osteoblast differentiation.

Target:	SATB Homeobox 2 (SATB2)
Clonality:	Polyclonal
Reactivity:	Human
Tested Applications:	ELISA, WB, IHC
Host:	Rabbit
Recommended dilutions:	WB: 1/200 - 1/2000, IHC: 1/20 - 1/200. Optimal dilutions/concentrations should be determined by the end user.
Conjugation:	Unconjugated
Immunogen:	SATB homeobox 2
Isotype:	IgG
Form:	Liquid
Purity:	≥ 95% (SDS-PAGE)

Datasheet

Version: 1.0.0
Revision date: 10 Feb 2025



Purification:	Purified by immunogen affinity chromatography.
Storage:	Aliquot and store at -20°C. Avoid repeated freeze/thaw cycles.
Validity:	12 months.
UniProt Primary AC:	Q9UPW6 (UniProt , ExPASy)
KEGG:	hsa:23314
Molecular Weight:	Observed MW: 69-83 kDa
Buffer:	PBS, pH 7.3, with 0.02% sodium azide and 50% glycerol.
Concentration:	2 mg/ml
Note:	This product is for research use only.

For Reference Only